

Clamping levers, tension levers, cam levers



K0005

Cam levers
internal and external thread
Material & Version :
Handles cast aluminum EN AC-46200,
Studs steel grade 5.8 or stainless steel
1.4305, Blue chromated or bright stainless steel.



K0788

Cam levers
internal and external thread
Material & Version :
Handle steel 1.0401, Blue chromated.
Stud steel, grade 5.8, Blue chromated.



K0645

Cam levers
internal and external thread
Material & Version :
Handles 1.4308, Electrolytic polished.
Stud 1.4305, Bright.



K0646

Cam levers with plastic handle
internal and external thread
Material & Version :
Handles plastic PA 66 fibreglass Reinforced, Black.
Studs steel grade 5.8 or stainless steel 1.4305,
Blue chromed or bright stainless steel.



K0006

Cam levers adjustable
external thread
Material & Version :
Handles cast aluminium EN AC-46200
Studs steel grade 5.8 or stainless steel
1.4305, Blue chromed or bright stainless steel.



K0789

Cam levers adjustable
external thread
Material & Version :
Handle steel 1.0401, Blue chromated.
Stud steel, grade 5.8, Blue chromated.



K0647

Cam levers adjustable
external thread
Material & Version :
Handles 1.4308, Electrolytic polished.
Screw 1.4305, Bright.



K0648

Cam levers adjustable
external thread
Material & Version :
Handles plastic PA 66 fibreglass Reinforced
Studs steel grade 5.8 or stainless steel.
1.4305, Blue chromed steel & stainless steel.



K0751

Cam levers with quick lock
Material & Version :
Handle fibreglass reinforced
plastic PA66, black.
Spring clip stainless steel 1.4310, passivated.



K0118

Cam lever with elastomer lock
Material & Version :
Handle Fibreglass Reinforced
Plastic PA 66, Black.
Stud steel grade 5.8, Blue chromated.



K0116

Clamping levers
internal thread
Material & Version :
Handle die-cast zinc DIN EN 12844.
Steel parts grade 5.8, Black oxidized.



K0116

Clamping levers
external thread
Material & Version :
Handle die-cast zinc DIN EN 12844 ,
Plastic coated.Steel parts grade 5.8,
Black oxidized.



K0117

Clamping levers
internal thread
Material & Version :
Handle die-cast zinc DIN EN 12844,
Plastic coated.
Steel parts stainless steel 1.4305, Bright.



K0117

Clamping levers
external thread
Material & Version :
Handle die-cast zinc DIN EN 12844,
Plastic coated.
Steel parts stainless steel 1.4305, Bright.



K0120

Clamping levers
internal thread
Material & Version :
Handle 1.0401, Silver-grey hammertone.
Steel parts grade 5.8, Black oxidized.



K0120

Clamping levers steel
external thread
Material & Version :
Handle 1.0401, Silver-grey hammertone.
Steel parts grade 5.8, Black oxidized.



K0121

Clamping levers
internal thread
Material & Version :
Handle stainless steel 1.4308,
Metal parts stainless steel 1.4305



K0121

Clamping levers
external thread
Material & Version :
Handle stainless steel 1.4308
Metal parts stainless steel 1.4305, Bright.



K0752

Clamping levers steel
internal thread
Material & Version :
Handle 1.0401, Plastic-coated
Steel parts grade 5.8, Black oxidized.



K0752

Clamping levers steel
external thread
Material & Version :
Handle 1.0401, Plastic-coated
Steel parts grade 5.8, Black oxidized.



K0122

Clamping levers
internal thread
Material & Version :
Handle die-cast zinc DIN EN 12844,
Plastic-coated or high-gloss chromated.
Steel parts grade 5.8, Black oxidized.



K0122

Clamping levers
external thread
Material & Version :
Handle die-cast zinc DIN EN 12844,
Plastic-coated or high-gloss chromated.
Steel parts grade 5.8, Black oxidized.



K0123

Clamping levers
internal thread
Material & Version :
Handle die-cast zinc DIN EN 12844,
Plastic-coated or high-gloss chromated.
Steel parts stainless steel 1.4305, Bright.



K0123

Clamping levers
external thread,
Material & Version :
Handle die-cast zinc DIN EN 12844,
Plastic-coated or high-gloss chromated.
Steel parts stainless steel 1.4305, Bright.



K0122

Clamping levers with protective cap
internal thread
Material & Version :
Handle die-cast zinc DIN EN 12844
Steel parts grade 5.8, Black oxidized.



K0122

Clamping levers with protective cap
external thread
Material & Version :
Handle die-cast zinc DIN EN 12844,
Plastic coated.
Steel parts grade 5.8, Black oxidized.



K0123

Clamping levers with protective cap
internal thread
Material & Version :
Handle die-cast zinc DIN EN 12844,
Plastic coated.
Steel parts stainless steel 1.4305, Bright.



K0123

Clamping levers with protective cap
external thread
Material & Version :
Handle die-cast zinc DIN EN 12844,
Plastic coated.
Steel parts stainless steel 1.4305, Bright.



K0124

Clamping levers
internal thread
Material & Version :
Handle investment cast 1.4308,
Electrolytic polished.
Steel parts 1.4305, Bright.



K0124

Clamping levers
external thread
Material & Version :
Handle investment cast 1.4308,
Electrolytic polished.
Steel parts 1.4305, Bright.



K0124

Clamping levers with protective cap
internal thread
Material & Version :
Handle investment cast 1.4308,
Electrolytic polished.
Steel parts 1.4305, Bright.



K0124

Clamping levers with protective cap
external thread
Material & Version :
Handle investment cast 1.4308,
Electrolytic polished.
Steel parts 1.4305, Bright.



K0737

Clamping levers flat
internal thread
Material & Version:
Handle die-cast zinc DIN EN 12844,
Plastic coated.
Steel parts grade 5.8, Black oxidized.



K0737

Clamping levers flat
external thread
Material & Version:
Handle die-cast zinc DIN EN 12844,
Plastic coated.
Steel parts grade 5.8, Black oxidized.



Clamping levers, tension levers, cam levers

K0738

Clamping levers flat
internal thread
Material & Version :
Handle die-cast zinc DIN EN 12844
Steel parts stainless steel 1.4305, Bright.



K0738

Clamping levers flat
external thread
Material & Version :
Handle die-cast zinc DIN EN 12844
Steel parts stainless steel 1.4305, Bright.



K0269

Clamping levers with plastic handle
internal thread
Material & Version :
Handle fibreglass reinforced plastic .
Steel parts grade 5.8, Black oxidized.



K0269

Clamping levers with plastic handle
external thread
Material & Version :
Handle fibreglass reinforced plastic.
Steel parts grade 5.8, Black oxidized.



K0270

Clamping levers with plastic handle
internal thread,
Material & Version:
Handle fibreglass reinforced plastic.
Steel parts stainless steel 1.4305, Bright.



K0270

Clamping levers with plastic handle
external thread
Material & Version:
Handle fibreglass reinforced plastic.
Steel parts stainless steel 1.4305, Bright.



K0269

Clamping levers with push button
internal thread
Material & Version :
Handle fibreglass reinforced plastic.
Steel parts grade 5.8, Black oxidized.



K0269

Clamping levers with push button
external thread
Material & Version :
Handle fibreglass reinforced plastic.
Steel parts grade 5.8, Black oxidized.



K0270

Clamping levers with push button
internal thread
Material & Version :
Handle fibreglass reinforced plastic.
Metal parts stainless steel 1.4305.



K0270

Clamping lever with push button
external thread
Material & Version :
Handle fibreglass reinforced plastic.
Metal parts stainless steel 1.4305.



K0269

Clamping levers antistatic
internal thread
Material & Version :
Handles reinforced plastic
Steel parts grade 5.8, Black oxidized.



K0269

Clamping levers antistatic
external thread
Material & Version :
Handles reinforced plastic
Steel parts grade 5.8, Black oxidized.



K0270

Clamping levers antibacterial
internal thread
Material & Version :
Handles slate grey reinforced plastic.
Steel parts stainless steel 1.4305, Bright.



K0270

Clamping levers antibacterial
external thread
Material & Version :
Handles slate grey reinforced plastic.
Steel parts stainless steel 1.4305, Bright.



K0125

Clamping levers 2K
internal thread
Material & Version:
Handle fibreglass reinforced plastic.
Steel parts grade 5.8, Black oxidized.



K0125

Clamping levers 2K
external thread
Material & Version :
Handle fibreglass reinforced plastic.
Steel parts grade 5.8, Black oxidized.



K0126

Clamping levers 2K
internal thread
Material & Version :
Handle glass-fibre-reinforced plastic.
Steel parts Stainless steel 1.4305, Bright.



K0126

Clamping levers 2K
external thread
Material & Version :
Handle fibreglass reinforced plastic.
Steel parts Stainless steel 1.4305, Bright.



K0252

Clamping lever ECO
internal thread
Material & Version :
Handle and insert reinforced plastic.
For size 1 and 2, brass bush.
For size 3, steel bush, Blue chromated.



K0252

Clamping lever ECO
external thread
Material & Version :
Handle and insert reinforced plastic.
Screw steel 5.8, Blue chromated.



K0981

Clamping levers ergonomic
internal thread
Material & Version :
Handle reinforced plastic.
Steel parts grade 5.8. Blue chromated.



K0981

Clamping levers ergonomic
external thread
Material & Version :
Handle reinforced plastic.
Steel parts grade 5.8. Blue chromated.



K0982

Clamping levers ergonomic
internal thread
Material & Version :
Handle reinforced plastic.
Steel parts stainless steel 1.4305, Bright.



K0982

Clamping levers ergonomic
external thread
Material & Version :
Handle reinforced plastic.
Steel parts stainless steel 1.4305, Bright.



K0780

Clamping levers with thrust pin
external thread
Material & Version :
Handles fibreglass reinforced plastic.
Steel parts grade 5.8, Black oxidized.



K0108

Tension levers
internal thread
Material & Version :
Steel parts grade 5.8, Plastic-coated
Ball knob black plastic.



K0108

Tension levers
external thread
Material & Version :
Steel parts grade 5.8,
Ball knob black plastic.



K0109

Tension levers
internal thread
Material & Version :
Steel parts stainless steel 1.4305, Bright.
Ball knob black plastic, Polished.



K0109

Tension levers
external thread
Material & Version :
Steel parts stainless steel 1.4305, Bright.
Ball knob black plastic, Polished.



K0112

Tension levers safety
internal thread
Material & Version :
Steel parts grade 5.8, Plastic-coated
with fine texture black.
Ball knob black plastic.



K0112

Tension levers safety
external thread
Material & Version :
Steel parts grade 5.8, Plastic-coated
with fine texture black.
Ball knob black plastic.



K0114

Tension levers flat
internal thread
Material & Version :
Steel parts grade 5.8, Black oxidized.
Ball knob black plastic.



K0114

Tension levers flat
external thread
Material & Version :
Steel parts grade 5.8, Black oxidized.
Ball knob black plastic.



K0129

Tension levers flat
internal thread
Material & Version :
Steel parts stainless steel 1.4305
Ball knob black plastic.



K0129

Tension levers flat
external thread
Material & Version :
Steel parts stainless steel 1.4305
Ball knob black plastic.



K0175

Clamping levers non-adjustable
Material & Version :
Handle fibreglass reinforced plastic.
Steel parts grade 5.8, Blue chromated.





K0137

Knurled nuts, DIN 6303
Material & Version:
Free-cutting steel 1.0718, Black oxidised.
Stainless steel 1.4305, Bright.



K0138

Knurled nuts
Material & Version:
Black Duroplast PF 31.
Tapped bush brass, Nickel plated.



K0141

Knurled screws
Material & Version:
Black Duroplast PF 31.
Screw steel, Galvanized.



K0139

Knurled nuts quick-acting
Material & Version:
Carbon steel, Tempered and black oxidised.



K0144

Knurled nuts flat, DIN 467
Material & Version:
Free-cutting steel 1.0718, Black oxidised.
Stainless steel 1.4305, Bright.



K0143

Knurled nuts high form, DIN 466
Material & Version:
Free-cutting steel 1.0718, Black oxidised.
Stainless steel 1.4305, Bright.



K0140

Knurled screws high, DIN 464
Material & Version:
Free-cutting steel 1.0718, Black oxidised.
Stainless steel 1.4305, Bright.



K0142

Knurled knobs
Material & Version :
Duroplastic PF 31, black.
Bushing brass, High-gloss polished.



K0247

Knurled knobs
Material & Version :
Thermoplastic, black grey.
Bush and threaded pin
steel 5.8 or stainless steel 1.4305.



K0247

Knurled knobs biopolymer
Material & Version:
Biopolymer, beech.
Bush or threaded pin steel 5.8.



K0247

Knurled knobs antistatic
Material & Version:
Thermoplastic, graphite black.
Bush or screw steel 5.8.



K0110

Knurled knobs
Material & Version:
Grip black grey thermoplastic.
Bush brass or stainless steel 1.4305.
Screw steel 5.8 or stainless steel 1.4305,
Blue chromated or Bright.



K0680

Knurled heads
for hexagon socket screws
Material & Version:
Thermoplastic, Black, grey or red.



K0681

Wing grips
for hexagon socket screws
Material & Version:
Thermoplastic, Black, grey or red.



K0145

Palm grips, DIN 6335
Material & Version:
Aluminium, Ground & Polished.



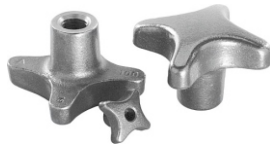
K0146

Palm grips, DIN 6335
Material & Version:
Stainless steel 1.4308, Polished.



K0147

Palm grips, DIN 6335
Material & Version:
Grey cast iron GJL 200,
Ground & bright.



K0682

Palm grips, DIN 6335
Material & Version:
Grey cast iron GJL 200, Plastic coated.



K0613

Palm grips soft
Material & Version:
Body hard thermoplastic, Black.
Coating soft thermoplastic, Black.
Bush or screw steel 5.8, Galvanized.



K0148

Palm grips, DIN 6335
Material & Version:
Black Duroplast PF 31, High-gloss polished
Bush and screw galvanized steel.



K1089

Palm grips
Material & Version:
Fibreglass reinforced thermoplastic.
Tapped bush brass.
Screw steel, Galvanized.



K1017

Palm grips, DIN 6335
Material & Version:
Duroplast PF 31, High-gloss polished black
Metal parts stainless steel 1.4305.



K0683

Palm grips quick-acting
Material & Version:
Grey cast iron GJL 300, Vibratory ground.



K0149

Star grips, DIN 6336
Material & Version:
Aluminium, Vibratory ground or
ground and polished.



K0150

Star grips, DIN 6336
Material & Version:
Stainless steel 1.4308,
Ground and polished.



K0151, DIN 6336

Star grips
Material & Version:
Grey cast iron GJL 200,
Vibratory ground Bright.



K0152, DIN 6336

Star grips
Material & Version:
Duroplast PF 31, Polished black.
Bush and screw steel,
galvanized and blue chromed.



K1016, DIN 6336

Star grips
Material & Version:
Duroplast PF 31, black,
High-gloss polished.
Bushing or threaded pin stainless steel.



K0153

Star grips
Material & Version:
Black thermoplastic.
Steel grade 5.8 or stainless steel 1.4305,
Blue chromated or Bright.



K0155

Star grips, DIN 6336
Material & Version:
Black thermoplastic.
Bush and screw steel,
Galvanized and blue chromated.



K0155

Star grips, DIN 6336
Material & Version:
Biopolymer,
Natural beech with beech fibres
Bush or threaded pin steel,
Galvanized and blue chromated.



K0154

Star grips antibacterial, DIN 6336
Material & Version:
Thermoplastic, slate grey.
Bush or threaded pin
stainless steel 1.4305, Bright.



K0155

Star grips antistatic, DIN 6336
Material & Version:
Thermoplastic, graphite black.
Bush or screw steel 5.8,
Blue chromated.



K0154

Star grips, DIN 6336
Material & Version:
Black thermoplastic.
Bush and screw stainless steel 1.4305.



Grips, Knobs

K1090

Star grips
Material & Version:
Fibreglass reinforced thermoplastic.
Tapped bush brass.
Screw steel, Galvanized.



K0155

Star grips with safety band, DIN 6336
Material & Version:
Grip thermoplastic.
Bush and screw steel.
Safety band elastic TPU.



K0154

Star grips with safety band, DIN 6336
Material & Version:
Grip thermoplastic.
Bush and screw stainless steel 1.4305.
Safety band elastic TPU.



K0743

Safety band
Material & Version:
Thermoplastic urethane TPU.



K0156

Star grips quick-acting
Material & Version:
Black thermoplastic.
Bush steel, galvanized and blue chromated.



K1088

Star grips with extended hub
Material & Version:
Fibreglass reinforced thermoplastic.
Tapped bush brass.



K0276

Ribbed grips
Material & Version:
Grip black grey thermoplastic.
Bush steel, Galvanized.
Threaded pin steel 5.8, Blue chromated.



K1020

Triangular grips
Material & Version:
Grip reinforced thermoplastic.
Steel parts grade 5.8, Blue chromated.



K0183

Triangular grips with high collar
Material & Version:
Black Duroplast PF 31, High-gloss.
Bush and screw galvanized steel or bright stainless steel.



K1083

Triangular grips
Material & Version:
Fibreglass reinforced thermoplastic.
Tapped bush brass.
Screw steel, Galvanized.



K0785

Triangular grips ergonomic
Material & Version:
Fibreglass reinforced plastic.
Bush or screw, steel grade 5.8 or stainless steel 1.4305.



K1019

Triangular torque grips
Material & Version:
Grip glass-bead reinforced thermoplastic.
Metal parts hardened stainless steel.



K0278

Four lobe grips flat
Material & Version:
Grip black hard thermoplastic.
Tapped bush brass.
Screw galvanized steel grade 5.8.



K1093

Four lobe grips
Material & Version:
Fibreglass reinforced thermoplastic.
Tapped bush brass.
Screw steel, Galvanized.



K0185

Five lobe grips
Material & Version:
Duroplast PF 31, Black High-gloss
Bush and stud galvanized steel.



K0279

Five lobe grips
Material & Version:
Grip black hard thermoplastic.
Tapped bush brass.
Screw galvanized steel grade 5.8.



K0786

Five lobe grips ergonomic
Material & Version:
Fibreglass reinforced plastic.
Bush or screw, steel grade 5.8 or stainless steel 1.4305.



K0280

Clamping grips high form
Material & Version:
Grip black hard thermoplastic.
Tapped bush brass.
Screw galvanized steel grade 5.8.



K0779

Clamping grips ergonomic
Material & Version:
Fibreglass reinforced plastic.
Bush or screw, steel grade 5.8 or
stainless steel 1.4305.



K0281

Knurled screws
Material & Version:
Grip black hard thermoplastic.
Tapped bush brass.
Screw galvanized steel grade 5.8.



K0255

Five lobe grips
Material & Version:
Thermoplastic, black grey.
Bush and screw steel 5.8 or
stainless steel 1.4305,



K0255

Five lobe grips antibacterial
Material & Version:
Thermoplastic, slate grey.
Bush or threaded pin
stainless steel 1.4305, Bright.



K0260

Knurled knobs
Material & Version:
Thermoplastic, black grey.
Bush or screw steel 5.8,
Blue chromated.



K0261

Knurled knobs
Material & Version:
Thermoplastic, black grey.
Bush and screw
stainless steel 1.4305, Bright.



K0250

Mushroom knobs internal thread
Material & Version:
Steel, stainless steel and aluminium,
Galvanized, Electropolished,
Natural tone anodized.



K0251

Mushroom knobs internal thread
Material & Version:
Thermoplastic, black grey.
Bush steel 5.8, Blue chromated or
stainless steel 1.4305, Bright.



K0251

Mushroom knobs external thread
Material & Version:
Thermoplastic, black grey.
Screw steel 5.8, Blue chromated or
stainless steel 1.4305, Bright.



K0251

Mushroom knobs biopolymer
Internal thread
Material & Version:
Biopolymer, beech.
Bush steel 5.8,



K0251

Mushroom knobs biopolymer
external thread
Material & Version:
Biopolymer, beech.
Threaded pin steel 5.8,
Galvanized and blue chromated.



K0251

Mushroom knobs antibacterial
internal thread
Material & Version:
Thermoplastic, slate grey.
Bush stainless steel 1.4305, Bright.



K0251

Mushroom knobs antibacterial
external thread,
Material & Version:
Thermoplastic, slate grey.
Threaded pin stainless steel 1.4305, Bright.



K0251

Mushroom knobs antistatic
internal thread
Material & Version:
Thermoplastic, graphite black.
Bush steel 5.8, Blue chromated.



K0251

Mushroom knobs antistatic
external thread
Material & Version:
Thermoplastic, graphite black.
Bush steel 5.8, Blue chromated.



K0273

Wing grips
internal thread
Material & Version:
Stainless steel 1.4308,
Blasted or ground and polished.



K0274

Wing grips
Material & Version:
Grip black grey thermoplastic.
Bush and screw steel 5.8,
Blue chromated or stainless steel 1.4305.



K0274

Wing grips antibacterial
metal parts stainless steel
Material & Version:
Thermoplastic, slate grey.
Bush or pin stainless steel 1.4305.



Grips, Knobs

K0274

Wing grips antistatic

Material & Version:

Thermoplastic, graphite black.

Bush or screw steel 5.8, Blue chromated.



K0274

Wing grips

tapped through

Material & Version:

Grip black, Grey.

Bush steel 5.8 or stainless steel 1.4305,

Blue chromated or bright.



K0783

Wing grips

Material & Version:

Grip polyamide, reinforced.

Bush brass or steel.

Screw steel, Galvanized.



K0608

Wing grips one-sided

Material & Version:

Thermoplastic, Black grey.

Bush steel 5.8 or stainless steel 1.4305,

Blue chromated or Bright.



K0274

Wing grips „Miniwing“

Material & Version:

Grip black grey thermoplastic.

Bush brass or stainless steel 1.4305.

Screw steel 5.8 or stainless steel 1.4305,

Blue chromated or bright.



K0274

Wing grips „Miniwing“ antibacterial

Material & Version:

Thermoplastic, slate grey.

Bush or threaded pin

stainless steel 1.4305.



K0274

Wing grips „Miniwing“ antistatic

Material & Version:

Thermoplastic, graphite black.

Bush brass or threaded pin steel 5.8,

Blue chromated.



K0658

Wing grips „Miniwing“

tapped through

Material & Version:

Grip thermoplastic, Black grey.

Bush steel 5.8 or stainless steel 1.4305,

Blue chromated or bright.



K0180

T-grips

Material & Version:

Fibreglass reinforced thermoplastic.

Tapped bush brass.

Screw steel, Galvanized.



K0181

T-grips

Material & Version:

Duroplast PF 31, black.

Bush and stud galvanized steel.



K0157

Knobs flat

Material & Version:

Steel, Black oxidised.



K0650

Ball knobs, DIN 319

Material & Version:

Stainless steel 1.4305

or aluminium, Polished.



K0158

Ball knobs, DIN 319

Material & Version:

Black thermoplastic.

Bush steel, Galvanized.



K0159

Ball knobs smooth, DIN 319

Material & Version:

Black Duroplast PF 31,

High-gloss polished.

Bush galvanized steel.



K0179

Handles

Material & Version:

Knobs Duroplast PF 31, High gloss polished.

Rod steel 1.0718 or stainless steel 1.4305,

Black oxidised or bright.



K0253

Spherical knobs

Material & Version :

Thermoplastic, black grey.

Bush and screw steel 5.8 or

stainless steel 1.4305,



K0253

Spherical knobs biopolymer

Material & Version:

Biopolymer, beech.

Bush or threaded pin steel 5.8,

Galvanized & blue chromated.



K0254

Spherical knobs

revolving

Material & Version:

Thermoplastic, black grey.

Axis steel 5.8 or stainless steel 1.4305,

Blue chromated or bright.



Position Indicators



K0725

Handwheels 2-spoke
Material & Version:
Handwheel reinforced polyamide,
Oil and grease resistant.
Centre plugs polyamide.
Tapped bush steel, Black oxidised.



K0725

Handwheels 2-spoke with revolving grip
Material & Version:
Handwheel reinforced polyamide,
Oil and grease resistant.
Tapped bush steel, Black oxidised.
Tapped insert for cylinder grip brass.



K0725

Handwheels 2-spoke with folding grip
Material & Version:
Handwheel reinforced polyamide,
Oil and grease resistant.
Black oxidised.



K0671

Handwheels, DIN 950
Material & Version:
Handwheel grey cast iron.
Wheel rim turned and polished.
Grip steel.



K0160

Handwheels, DIN 950
Material & Version:
Handwheel aluminium.
Fixed grip aluminium, axle part steel,
Black oxidised.



K0161

Handwheels disc type
Material & Version:
Disc handwheel aluminium.
Cylinder grip black Duroplast
PF 31-DIN 7708.
Hub galvanized steel.



K0162

Handwheels 2-spoke flat rim
Material & Version:
Handwheels aluminium.
Cylinder grip black Duroplast
PF 31-DIN 7708. Hub galvanized steel.



K0163

Handwheels disc, DIN 950
Material & Version:
Handwheel aluminium.
Wheel rim turned and polished



K0164

Handwheels disc with revolving grip
Material & Version:
Duroplast PF 31, black.
Hubnickel plated steel or
Bright stainless steel 1.4305.



K0165

Handwheels disc without grip
Material & Version:
Black Duroplast PF 31.
Hub nickel-plated steel or
bright stainless steel 1.4305.



K0256

Handwheels
Material & Version:
Black grey thermoplastic.
Steel parts black oxidised.



K0257

Handwheels with revolving grip
Material & Version:
Black grey thermoplastic.
Steel parts black oxidised.



K0258

Handwheels with fold-down grip
Material & Version:
Black grey thermoplastic.
Steel parts black oxidised.



K0259

Handwheels with safety grip
Material & Version:
Black grey thermoplastic.
Steel parts black oxidised.



K0184

Handwheels
Material & Version:
Handwheel Duroplast PF 31,
High gloss polished.
Bush steel, black oxidised.



K0262

Positioning wheels
Material & Version:
Thermoplastic, black grey.
Bush steel 5.8, Chromed steel.



Handwheels, Crank Handles,

Position Indicators

K0275

Deltawheels

Material & Version:

Fibreglass reinforced thermoplastic.



K0726

Ball grips revolving

Material & Version:

Ball Duroplast PF 31, Glossy black.

Bush and screw steel

or stainless steel 1.4305,

Steel blue chromed or bright stainless steel.



K0684

Crank handles offset, DIN 468

Material & Version:

Crank arm malleable or ductile iron,

Blasted.



K0685

Crank handles straight, DIN 469

Material & Version:

Crank arm malleable or ductile iron,

Blasted.



K0727

Crank handles

Material & Version:

Aluminium arm, Plastic coated.

Grip thermoplastic, Black.



K0997

Crank handles with fold-away grip

Material & Version:

Crank AlSi9Cu3 (3.2163),

Plastic powder coated.

Cylinder grip thermoplastic (PA6), Black.

Steel part, Black oxidised.



K0996

Crank handles with revolving grip

Material & Version:

Crank AlSi9Cu3 (3.2163),

Plastic powder coated.

Revolving grip thermoplastic (PA6), Black

Steel 1.0718, Black oxidised.



K0998

Crank handles with safety grip

Material & Version:

Crank AlSi9Cu3 (3.2163),

Plastic powder coated.

Cylinder grip thermoplastic (PA6), Black.

Steel part, Black oxidised.



K0999

Crank handles with revolving grip

Material & Version:

Crank stainless steel 1.4308.

Revolving grip stainless steel 1.4305.



K0266

Crank handles with fold-down grip

Material & Version:

Black grey thermoplastic.

Steel parts black oxidised.



K0659

Crank handles with revolving grip

Material & Version:

Black grey thermoplastic.

Steel parts black oxidised.



K0268

Crank handles with safety grip

Material & Version:

Arm and grip black grey thermoplastic.

Steel parts black oxidised.



K0728

Crank handles balanced

Material & Version:

Steel, Galvanized.



K0740

Cylindrical grips revolving

with hexagon socket

Material & Version:

Grip thermoplastic.

Steel parts galvanized.



K0774

Cylindrical grips revolving

Material & Version:

Grip thermoplastic.

Steel parts galvanized.



K0775

Cylindrical grips fold-down

Material & Version:

Grip thermoplastic.

Steel parts black oxidised.



K1000

Cylindrical grips revolving

Material & Version:

Axis stainless steel 1.4305.

Revolving grip stainless steel 1.4305.

Snap ring stainless-steel 1.4310.



K0263

Cylindrical grips revolving

Material & Version:

Black grey thermoplastic.

Steel parts black oxidised.



K0264

Cylindrical grips fold-down
Material & Version:
Black grey thermoplastic.
Steel parts black oxidised.



K0265

Cylindrical grips safety automatic return
Material & Version:
Black grey thermoplastic.
Steel parts black oxidised.



K0166

Machine handles fixed, DIN 39 Form E
Material & Version:
Grip and screw steel,
Galvanized & blue chromed.



K0167

Machine handles fixed, DIN 39 Form E
Material & Version:
Grip aluminium, Polished.
Screw steel, Black.



K0168

Machine handles revolving, DIN 98 Form E
Material & Version:
Grip and screw steel,
Galvanized & blue chromed.



K0169

Machine handles revolving, DIN 98 Form E
Material & Version:
Grip aluminium, Polished.
Screw steel, Galvanized & Blue chromed.



K0170

Taper grips revolving
Material & Version:
Black Duroplast PF 31, High polished.
Axle and threaded bush galvanized steel
or bright stainless steel.



K0651

Taper grips revolving oval
Material & Version:
Duroplast PF 31, black.
Axle steel, nickel-plated or bright
stainless steel 1.4305.



K0172

Taper grips
Material & Version:
Duroplast PF 31, black.
Bush and stud galvanized steel.



K0173

Handwheel washers
Material & Version:
Steel 1.0718, Black oxidised.
Stainless steel 1.4305, Bright.



K0408

Position indicators
Material & Version:
Housing polyamide 6,
Impact- resistant.
Hollow shaft steel, Black oxidised.



K0409

Position indicators
Material & Version:
Housing polyamide 6,
Impact- resistant.
Hollow shaft steel, Black oxidised.



K0410

Position indicators
Material & Version:
Housing polyamide 6,
Impact- resistant.
Hollow shaft steel, Black oxidised.



K0411

Position indicators freely programmable
Material & Version:
Housing plastic.
Hollow shaft steel, Black oxidised.
Screen LCD display.



K0771

Position indicators freely programmable
Material & Version:
Housing plastic.
Hollow shaft steel, Black oxidised.
Screen LCD display.



K0412

Reducing bushings
Material & Version:
Steel, Black oxidised.



K0413

Intermediate plates
Material & Version:
Plastic



K0414

Mounting brackets
Material & Version:
Housing aluminium, Anodized
Clamping lever plastic, Black grey.



Pull Handles, Tubular Handles, Recessed Handles



K0187

Pull handles
Material & Version:
Duroplast PF 31,
High gloss polished black .
Bushing brass or galvanized steel.



K0188

Pull handles
Material & Version:
Duroplast PF 31, High gloss polished black.
Bushing brass or galvanized steel



K1074

Pull handles
Material & Version :
Duroplast FS 3, Black.
Threaded insert steel.



K0189

Pull handles
Material & Version:
Thermoplastic, Black.
Bushing brass.



K1092

Pull handles
Material & Version :
Fibreglass reinforced thermoplastic.
Tapped bush brass.



K0190

Pull handles
Material & Version:
Material:
Thermoplast PA (polyamide),
glass-bead reinforced
or PP (polypropylene), fibreglass reinforced.



K0190

Pull handles antibacterial
Material & Version:
Thermoplastic PA
(polyamide) reinforced.



K0190

Pull handles antistatic
Material & Version :
Thermoplastic PA
(polyamide) reinforced,
Graphite black.



K0191

Pull handles
Material & Version :
Glass bead reinforced thermoplastic,
Matt black or orange.



K0200

Pull handles
Material & Version :
Glass-bead reinforced thermoplastic,
Matt black with fine texture.



K0237

Pull handles
open-ended screw on
Material & Version :
Glass-bead reinforced thermoplastic,
Matt black with fine texture



K0241

Pull handles
fold-down
Material & Version :
Frame and grip glass-bead
reinforced thermoplastic.



K0244

Pull handles
angled
Material & Version :
Glass-bead reinforced
thermoplastic PA,Black.



K1087

Pull handles
Material & Version :
Fibreglass reinforced thermoplastic.
Tapped bush brass.



K0171

Pull handles
with soft inner face
Material & Version :
Hard components glass-bead
reinforced thermoplastic, Matt black.
Soft components SEBS, Basalt grey.



K0197

Pull handles
oblique
Material & Version :
Grip glass-bead reinforced thermoplastic.
Bushing brass.



Pull Handles, Tubular Handles, Recessed Handles

K0192

Pull handles

Material & Version:

Glass-bead reinforced thermoplastic,
Matt black.



K0193

Pull handles

Material & Version:

Glass-bead reinforced thermoplastic,
Matt black.



K0194

Pull handles

Material & Version:

Black grey thermoplastic.



K0196

Pull handles

Material & Version:

Black grey thermoplastic.
Bushing brass.



K0242

Recessed handles

Material & Version:

Glass-bead reinforced thermoplastic,
Semi-matt, black or light grey.



K1077

Recessed handles

Material & Version:

Thermoplastic (ABS), Black.



K1078

Recessed handles

Material & Version:

Thermoplastic (ABS), Black.



K1079

Recessed handles

Material & Version:

Thermoplastic (ABS), Black.



K0195

Pull handles

Material & Version:

Profile aluminium EN AW-6060,
High quality anodized version
or glass-bead blasted or semi-gloss.



K0199

Pull handles

Material & Version :

EN AW-6060, Matt-finished and
anodized or powder-coated.



K0201

Pull handles round

Material & Version :

Round aluminium,
Surface matt-finished and natural
colour or black Anodized.



K0202

Pull handles oval

Material & Version :

Oval aluminium,
Surface matt-finished and natural
colour anodized or black anodized.



K0203

Pull handles round

Material & Version :

Round steel, matt-polish chrome plated.
Grip plastic coated.



K0204

Pull handles oval

Material & Version :

Oval aluminium EN AW-6060,
Black powder-coated or natural
colour anodized.



K0204

Pull handles oval

with thru hole

Material & Version :

Oval aluminium EN AW-6060,
Black powder-coated or ruby red



K0204

Pull handles oval detachable

Material & Version :

Pull handle oval aluminium EN AW-6060,
Black powder coated.



K0205

Pull handles

Material & Version :

Profile aluminium EN AW-6060,
Matt-finished, black or natural
colour anodized.



K0213

Pull handles

Material & Version :

Profile aluminium EN AW-6060,
Matt-finished, black anodized or
natural colour Anodized.



Recessed Handles

K1091

Pull handles

Material & Version:

Aluminium, Matt-finished, black anodized or natural colour anodized.



K1075

Pull handles

Material & Version:

Aluminium, Matt-finished, black anodized or natural colour anodized.



K0219

Pull handles angled

Material & Version:

Aluminium, Matt-finished, black anodized or natural colour anodized.



K0229

Pull handles angled

Material & Version:

Round aluminium EN AW-6060, Ground, glass blasted and matt-gloss black anodized.



K0216

Pull handles

Material & Version:

Grip aluminium.
Legs glass-bead-reinforced polyamide.



K0217

Pull handles

Material & Version:

Grip aluminium.
Legs high-strength plastic



K0228

Pull handles

Material & Version:

Legs and grip aluminium EN AW-6060, Black anodized or natural colour anodized.



K0795

Tubular handles compact

Material & Version:

Aluminium EN AW-6060, Natural colour anodized.



K1018

Tubular handles adjustable

Material & Version:

Handle tube EN AW-6060.
Mounting bracket EN AW-6063.



K0210

Tubular handles

Material & Version :

Legs black glass-bead reinforced thermoplastic, Grip tube aluminium.



K0211

Tubular handles

Material & Version :

Grip aluminium EN AW-6060.
Legs polyamide glass-bead reinforced



K0212

Tubular handles oblique

Material & Version :

Grip tube aluminium EN AW-6060, matt-polished anodized.
Legs polyamide, glass-bead reinforced.



K0221

Tubular handles

Material & Version :

Legs black glass-bead reinforced thermoplastic. Grip aluminium EN AW-6060.



K0222

Tubular handles

Material & Version :

Legs black glass-bead reinforced thermoplastic. Grip aluminium EN AW-6060 or stainless steel 1.4301.



K0223

Tubular handles

Material & Version :

Grip aluminium EN AW-6060.
Legs glass-bead reinforced polyamide.



K0224

Tubular handles

Material & Version :

Legs and tube cap glass-bead reinforced polyamide.
Grip aluminium EN AW-6060.



K0231

Tubular handles „Bighand“

Material & Version :

Legs thermoplastic.
Oval grip aluminium, coated or anodized.



K0131

Tubular handles

Material & Version :

Legs and grip aluminium profile EN AW-6060.
Connecting pins stainless steel.



Recessed Handles

K0132

Tubular handles angled
Material & Version:
Legs EN AW-6060 extruded.
Grip inserts glass-bead reinforced thermoplastic. Grip EN AW-6060.



K0235

Tubular handles angled
Material & Version:
Grip aluminium EN AW-6060 or stainless steel 1.4301.
Legs polyamide glass-bead reinforced.



K0236

Tubular handles
Material & Version:
Grip aluminium EN AW-6060.
Legs polyamide glass-bead reinforced, Aluminium colour or black.



K0220

Tubular handles angled
Material & Version:
Leg glass-bead reinforced thermoplastic, Black. Grip aluminium tube, Anodized aluminium..



K0209

Tubular handles
Material & Version:
Aluminium, Natural colour anodized.
Leg black powder-coated.



K0232

Ledge handles
Material & Version:
Profile aluminium EN AW-6060,
Matt-finished and natural colour or black anodized.



K0130

Ledge handles
Material & Version:
Profile aluminium EN AW-6060,
Matt-gloss anodized.
End caps black thermoplastic.



K0234

Ledge handles
Material & Version:
Profile aluminium EN AW-6060,
Matt-gloss anodized.



K0238

Recessed handles
Material & Version:
Grip aluminium profile.
End caps polyamide.



K0239

Recessed handles fold-down
Material & Version :
Tray and grip aluminium profile.
End caps polyamide.



K0240

Recessed handles fold-down
Material & Version :
Die-cast aluminium, Tray and handle black or light grey powder-coated.



K0198

Pull handles stainless steel
Material & Version :
Investment cast stainless steel 1.4308,
Abrasive cleaned and matt gloss electropolished. Fasteners made of 1.4301



K0206

Pull handles stainless steel
Material & Version :
Handle stainless steel 1.4305,
Electropolished. Fasteners 1.4301



K0208

Pull handles stainless steel
Material & Version :
Handle stainless steel 1.4305,
Semi-gloss tumbled.
Fastening material 1.4301.



K1086

Pull handles stainless steel
Material & Version :
Stainless steel 1.4301,
Semi-gloss tumbled.



K0215

Pull handles stainless steel
Material & Version :
Handle stainless steel 1.4305,
Ground and satin brushed finish.
Fasteners made of 1.4301



K0218

Pull handles fold-down
Material & Version :
Steel or stainless steel 1.4305,
Fine ground and high-gloss chromed or
Form B grip with smooth plastic sleeve
& Form C semi-gloss score-free tumbled.



K0225

Tubular handles
Material & Version :
Grip stainless steel 1.4301.
Legs die-cast aluminium.
End caps glass-bead reinforced plastic.



Quarter-Turn Locks, Compression Latches



K0518

Quarter-turn locks
small version
Material & Version :
Housing and actuator die-cast zinc,
Chrome plated. Wing handle,
Powder coated. Tongue steel, Galvanized.



K0520

Quarter-turn locks
with cylinder, small version
Material & Version :
Housing and actuator die-cast zinc,
Chrome plated. Tongue steel, Galvanized.



K0522

Quarter-turn locks
Material & Version :
Housing & actuator die-cast zinc,
Chrome plated. Housing & actuator PA6
GFR 30 plastic, Black.
Tongue steel, Galvanized.



K0524

Quarter-turn security locks
Material & Version :
Housing, actuator, nut and
key die-cast zinc,
Chrome plated or Black powder coated.
Tongue steel, Galvanized.



K0525

Quarter-turn locks
with wing grip
Material & Version :
Housing and nut die-cast zinc,
Chrome plated. Grip plastic PA6 GF 30,
Black. Tongue steel, Galvanized.



K0526

Quarter-turn locks
with T-grip
Material & Version :
Housing and nut die-cast zinc,
Chrome plated. T-grip plastic PA6 GF 30,
Black. Tongue steel, Galvanized.



K0527

Compression latches
with stepped cam
Material & Version :
Housing, actuator, nut and cam
die-cast zinc, Chrome plated.



K0528

Compression latches
with variable compression
Material & Version :
Compression latch steel, Galvanized
& blue chromed.
DIN 6336 star grip Duroplast, Black.



K0529

Compression latches
Material & Version :
Housing and actuator die-cast zinc,
Chrome plated.
Tongue steel, Galvanized.



K0531

Compression latches
with adjustable tongue gap
Material & Version :
Housing and actuator die-cast zinc,
Chrome plated. Wing handle,
Powder coated. Tongue steel, Galvanized.



K0533

Dust caps
Material & Version :
Thermoplastic plastic (PU), Black.



K0534

Opening grips
Material & Version :
Thermoplastic plastic (PU), Black.



K0535

Keys
for latches and locks
Material & Version :
Die-cast zinc, Chromium plated.



K0271

Stop latches
Material & Version :
Housing die-cast zinc, plastic-coated.
Pin steel 1.0718, Blue chromed.
Countersunk screw steel grade 8.8.





K0434

Hinges
plastic, lift-off, left
Material & Version :
Fibreglass reinforced thermoplastic, Black.
Hinge pin stainless steel, Bright.



K0434

Hinges
plastic, lift-off, right
Material & Version :
Fibreglass reinforced thermoplastic, Black.
Hinge pin stainless steel, Bright.



K0435

Hinges
plastic
Material & Version :
Fibreglass reinforced thermoplastic, Black.
Hinge pin stainless steel, Bright.



K0436

Hinges
plastic, with locking lever
Material & Version :
Hinge and lever fibreglass reinforced thermoplastic, Black.
Hinge pin steel, Galvanized.



K0437

Hinges
plastic, with elongated holes
Material & Version :
Fibreglass reinforced thermoplastic, Black.
Hinge pin stainless steel, Bright.



K0438

Hinges
plastic, lift-off, with guide tabs
Material & Version :
Fibreglass reinforced thermoplastic, Black.
Hinge pin stainless steel, Bright.



K0439

Hinges
plastic, detent
Material & Version :
Hinge and caps fibreglass reinforced PA thermoplastic.
Hinge pin stainless steel, Bright.



K0440

Hinges
plastic, with adjustable friction
Material & Version :
Hinge and caps fibreglass reinforced PA thermoplastic.
Hinge pin stainless steel, Bright.



K1004

Hinges plastic
with fastening holes
Material & Version :
Fibreglass reinforced thermoplastic, Black.
Hinge pin steel, Galvanized.



K1005

Hinges plastic
with bushing
Material & Version :
Fibreglass reinforced thermoplastic.
Hinge pin steel, Galvanized.
Bushes brass.



K1006

Hinges plastic
with fastening screws
Material & Version :
Fibreglass reinforced thermoplastic, Black.
Hinge pin steel, Galvanized.



K1007

Hinges plastic
with bushes and fastening screws
Material & Version :
Fibreglass reinforced thermoplastic, Black.
Hinge pin steel, Galvanized.
Bushes brass.



K0441

Hinges
die-cast zinc with elongated holes
Material & Version :
Die-cast zinc, Black powder coated.
Hinge pin stainless steel, Bright.



K0442

Hinges
die-cast zinc, with locking lever
Material & Version :
Hinge die-cast zinc, Black powder coated.
Hinge pin steel, Galvanized.
Lever fibreglass reinforced thermoplastic.



K0579

Hinges
aluminium, lift-off, left
Material & Version :
Die-cast aluminium, Nickel plated.
Hinge pin stainless steel, Bright.



K0579

Hinges
aluminium, lift-off, right
Material & Version :
Die-cast aluminium, Nickel plated.
Hinge pin stainless steel, Bright.



Swivel Feet, Levelling Feet



K0421

Swivel feet threaded spindles

Material & Version :

Steel or stainless steel 1.4301.

Steel blue chromed or stainless steel bright



K0422

Swivel feet ball joints with internal thread

Material & Version :

Steel or stainless steel 1.4301.

Steel blue chromed or stainless steel bright



K0415

Swivel feet plates

Material & Version :

Plates, Thermoplastic glass bead reinforced.

Anti-slip plate, Thermoplastic elastomer



K0416

Swivel feet plates

Material & Version :

Plate die-cast zinc, Black powder coated or Stainless steel 1.4305, Bright.

Anti-slip plate thermoplastic elastomer.



K0654

Swivel feet plates extended

Material & Version :

Plates, Thermoplastic fibreglass reinforced.

Anti-slip plate, Thermoplastic elastomer.



K0417

Swivel feet plates extended

Material & Version :

Plate die-cast zinc, Black powder coated.

Anti-slip plate thermoplastic elastomer.



K0418

Swivel feet plates

Material & Version :

Plates stainless steel 1.4301, Bright.

Core thermoplastic PA.

Rubber support TPE, Hardness 70 shore A.



K0419

Swivel feet plates with vibration absorption

Material & Version :

Plate die-cast zinc, Black powder coated or Stainless steel 1.4305, Bright.

Damper plate PUR elastomere (Sylomer V12), Anti-slip.



K0670

Machine feet with vibration absorption

Material & Version :

Plate steel, Blue chromed.

Damper plate PUR elastomer (Sylomer V12), Anti-slip.



K0427

Levelling feet threaded spindles

Material & Version :

Steel, Blue chromed or

Stainless steel 1.4305, Bright.



K0423

Levelling feet plates

Material & Version :

Plates, Thermoplastic fibreglass reinforced.

Anti-slip plate, Thermoplastic elastomer.



K0424

Levelling feet plates, heavy-duty version

Material & Version :

Plates, Thermoplastic fibreglass reinforced.

Anti-slip plate, Thermoplastic elastomer.



K0425

Levelling feet plates

Material & Version :

Plate die-cast zinc, Black powder coated or Stainless steel 1.4305, Bright.

Anti-slip plate thermoplastic elastomer.



K0426

Levelling feet plates extended

Material & Version :

Plate die-cast zinc, Black powder coated.

Anti-slip plate thermoplastic elastomer.



K0429

Levelling feet ECO-Line threaded spindles

Material & Version :

Steel or stainless steel 1.4305, Blue-chromed steel or Bright stainless steel.



K0428

Levelling feet plates ECO-Line

Material & Version :

Plate thermoplastic, Black.

Plate die-cast zinc, Blue galvanized.

Plate stainless steel 1.4305, Bright.

Anti-slip plate thermoplastic elastomer.



K0669

Levelling feet threaded spindles

Material & Version :

Steel or stainless steel 1.4301,

Steel galvanized or stainless steel bright



K0672

Levelling feet plates

Material & Version :

Plate steel or stainless steel 1.4301,

Steel chrome-plated or

stainless steel polished,

glass-bead blasted.



K0673

Levelling feet plates with rubber base

Material & Version :

Plate steel, Chromed or

stainless steel 1.4301, Polished.

Rubber base NBR, 70 Shore A.



K0739

Levelling feet

Material & Version :

Foot plate and threaded spindle

steel or stainless steel.

Rubber support (NBR) 80 Shore.



K0741

Levelling feet for sterile areas

Material & Version :

Stainless steel foot plate 1.4301, Polished.

Stainless steel threaded spindle 1.4301, Bright.

Rubber base and rubber seal (EPDM).



K0742

Swivel feet

Material & Version :

Foot plate, Painted yellow,

Threaded spindle steel, Galvanized.

Anti-slip plate (NBR) 70 Shore.



K0674

Levelling feet round

Material & Version :

Plate polyamide, Black.

Screw steel, Galvanized.



K0675

Levelling feet round with hex. collar

Material & Version :

Plate polyamide, Black.

Screw steel, Galvanized.



K0676

Levelling feet with hex. base

Material & Version :

Plate polyethylene, Black.

Steel screw, Galvanized.



K0677

Levelling feet with knurled base

Material & Version :

Plate polyamide, Black.

Screw steel, Galvanized.



K0678

Levelling feet

Material & Version :

Foot plate and threaded spindle in steel,

Galvanized.



K0679

Levelling feet caps

Material & Version :

Polyethylene, Black.



K0687

Machine feet

Material & Version :

Metal parts, steel grade 5.6, Galvanized.

Elastomer, natural rubber,

medium hardness, 60 Shore.



K0304

Swivel feet

Material & Version :

Ball element case-hardened steel.

Thrust pad mild steel ETG 100,

Black oxidised.



K0395

Swivel feet

Material & Version :

Thrust plate in carbon steel

or stainless steel or POM. Ball element in

free-cutting steel or case hardened.

Anti-slip-plate thermoplastic elastomer.



K0420

Swivel feet with vibration absorption

Material & Version :

Thrust plate in carbon steel

or stainless steel. Ball element in

free-cutting steel or case hardened.

Damper plate PUR elastomere (Sylomer V12).



K0391

Grub screws with ball thrust point

Material & Version :

Grade 5.8, Black oxidised.



K0393

Thrust pads

Material & Version :

Steel, Black oxidised.

PA 6 plastic, Black.



Tube Connectors, Profile Connectors



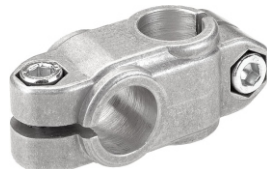
K0472

Tube clamps cross
Material & Version:
Thermoplastic, Black.
Screws and nuts steel, Galvanized.



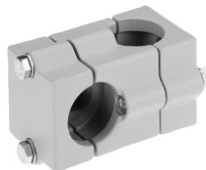
K0472

Tube clamps cross
Material & Version:
Cast aluminium, Vibratory ground.
Screws and nuts steel, Galvanized



K0472

Tube clamps cross
Material & Version:
Cast aluminium, Vibratory ground.
Screws and nuts steel, Galvanized.



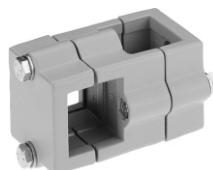
K0473

Tube clamps cross
Material & Version:
Thermoplastic, Black.
Screws and nuts steel, Galvanized.



K0473

Tube clamps cross
Material & Version:
Cast aluminium, Vibratory ground.
Screws and nuts steel, Galvanized.



K0474

Tube clamps cross
Material & Version:
Thermoplastic, Black.
Screws and nuts steel, Galvanized.



K0474

Tube clamps cross
Material & Version:
Cast aluminium, Vibratory ground.
Screws and nuts steel, Galvanized.



K0475

Tube clamps T-angle
Material & Version:
Thermoplastic, Black.
Screws and nuts steel, Galvanized.



K0475

Tube clamps T-angle
Material & Version:
Cast aluminium, Vibratory ground.
Screws and nuts steel, Galvanized.



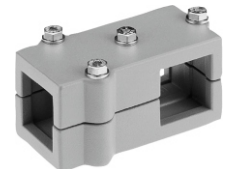
K0476

Tube clamps T-angle
Material & Version:
Thermoplastic, Black.
Screws and nuts steel, Galvanized.



K0476

Tube clamps T-angle
Material & Version:
Cast aluminium, Vibratory ground.
Screws and nuts steel, Galvanized.



K0476

Tube clamps right-angle
Material & Version:
Cast aluminium, Vibratory ground.
Screws and nuts steel, Galvanized.



K0477

Tube clamps base
plastic
Material & Version:
Thermoplastic, Black.
Screws and nuts steel, Galvanized.



K0477

Tube clamps base
aluminium
Material & Version:
Cast aluminium, Vibratory ground.
Screws and nuts steel, Galvanized.



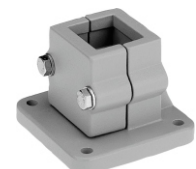
K0478

Tube clamps base
plastic
Material & Version:
Thermoplastic, Black.
Screws and nuts steel, Galvanized.



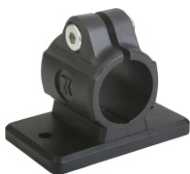
K0478

Tube clamps base
aluminium
Material & Version:
Cast aluminium, Vibratory ground.
Screws and nuts steel, Galvanized.



K0479

Tube clamps flange
plastic
Material & Version:
Thermoplastic, Black.
Screws and nuts steel, Galvanized.



K0479

Tube clamps flange
aluminium
Material & Version:
Cast aluminium, Vibratory ground.
Screws and nuts steel, Galvanized



K0479

Tube clamps flange
aluminium
Material & Version:
Cast aluminium, Vibratory ground.
Screws and nuts steel, Galvanized



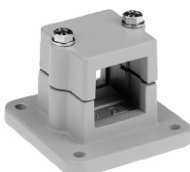
K0480

Tube clamps flange
plastic
Material & Version:
Thermoplastic, Black.
Screws and nuts steel, Galvanized.



K0480

Tube clamps flange
aluminium
Material & Version:
Cast aluminium, Vibratory ground.
Screws and nuts steel, Galvanized



K0481

Tube clamps straight
plastic
Material & Version:
Thermoplastic, Black.
Screws and nuts steel, Galvanized.



K0483

Tube clamps straight
plastic
Material & Version:
Thermoplastic, Black.
Screws and nuts steel, Galvanized.



K0484

Tube clamps swivel half
sunken teeth plastic
Material & Version:
Thermoplastic, Black.
Screws and nuts steel, Galvanized.



K0485

Tube clamps swivel half
raised teeth, plastic
Material & Version:
Thermoplastic, Black.
Screws and nuts steel, Galvanized.



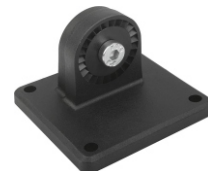
K0486

Tube clamps swivel half
sunken teeth, plastic
Material & Version:
Thermoplastic, Black.
Screws and nuts steel, Galvanized.



K0487

Tube clamps swivel base
sunken teeth, plastic
Material & Version:
Thermoplastic, Black.
Screws and nuts steel, Galvanized.



K0488

Tube clamps swivel
plastic
Material & Version:
Thermoplastic, Black.
Screws and nuts steel, Galvanized.



K0488

Tube clamps swivel
aluminium
Material & Version:
Cast aluminium, Vibratory ground.
Screws and nuts steel, Galvanized



K0489

Tube clamps swivel
plastic
Material & Version:
Thermoplastic, Black.
Screws and nuts steel, Galvanized.



K0489

Tube clamps swivel
aluminium
Material & Version:
Cast aluminium, Vibratory ground.
Screws and nuts steel, Galvanized



K0490

Tube clamps swivel base
plastic
Material & Version:
Thermoplastic, Black.
Screws and nuts steel, Galvanized.



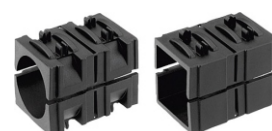
K0490

Tube clamps swivel base
aluminium
Material & Version:
Cast aluminium, Vibratory ground.
Screws and nuts steel, Galvanized



K0491

Reducer sleeves
square
Material & Version:
Thermoplastic, Black.



Tube Connectors, Profile Connectors

K0492

Reducer sleeves
round
Material & Version:
Thermoplastic, Black.



K0493

Round and square tubes
Material & Version:
Steel 1.0037, Galvanized.
Aluminium EN AW-6060, Anodized.



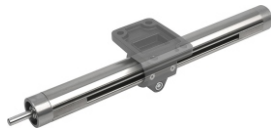
K0494

Tube end plugs
Material & Version:
Thermoplastic, Black.



K0495

Linear actuators, DIN EN 10305
Material & Version:
Precision tube, stainless steel
1.4301.
For type E 18, galvanized steel.
Trapezoid thread spindle steel, RH thread, rolled



K0496

Linear actuatorconnector clamps
Cross
Material & Version:
Cast aluminium, Black powder coated
Screws and nuts steel, Galvanized



K0497

Linear actuatorconnector clamps
Cross
Material & Version:
Cast aluminium, Black powder coated
Screws and nuts steel, Galvanized



K0498

Linear actuatorconnector clamps
Flange
Material & Version:
Cast aluminium, Black powder coated
Screws and nuts steel, Galvanized



K0499

Linear actuatorconnector clamps
Base
Material & Version:
Cast aluminium, Black powder coated
Screws and nuts steel, Galvanized



K0615

Square tube connectors
Straight
Material & Version:
Polyamide PA, black.
Core galvanized steel.



K0616

Square tube connectors
two-way
Material & Version:
Polyamide PA, black.
Core galvanized steel.



K0617

Square tube connectors
three-way, flat
Material & Version:
Polyamide PA, black.
Core galvanized steel.



K0618

Square tube connectors
four-way, flat
Material & Version:
Polyamide PA, black.
Core galvanized steel.



K0619

Square tube connectors
three-way
Material & Version:
Polyamide PA, black.
Core galvanized steel.



K0620

Square tube connectors
four-way
Material & Version:
Polyamide PA, black.
Core galvanized steel.



K0621

Square tube connectors
five-way
Material & Version:
Polyamide PA, black.
Core galvanized steel.



K0622

Square tube connectors
six-way
Material & Version:
Polyamide PA, black.
Core galvanized steel.



K0623

Square tube connectors
three-way with tapped hole
Material & Version:
Polyamide PA, black.
Core galvanized steel.



K0624

Square tube connectors
Four-way with tapped hole
Material & Version:
Polyamide PA, black.
Core galvanized steel.



K0625

Square tube connectors
two-way swivel
Material & Version:
Polyamide PA, Black.
Screws and nuts, Galvanized steel.



K0626

Square tube connectors
three-way swivel
Material & Version:
Polyamide PA, Black.
Screws and nuts, Galvanized steel.



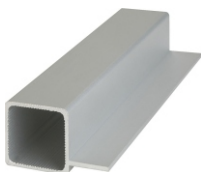
K0627

Square tubes
Material & Version:
Aluminium profile, Silver anodized.



K0628

Square tubes
finned
Material & Version:
Aluminium profile, Silver anodized.



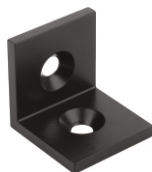
K1042

Straps
Material & Version:
Steel, Black powder-coated.



K1043

Angles
Material & Version:
Steel, Black powder-coated.



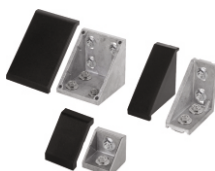
K1045

Angle sets, Type I
Material & Version:
Angle die-cast zinc.
Screws and slot nuts steel, Galvanized.
End cap polyamide, Fibreglass reinforced.



K1046

Angle sets, Type B
Material & Version:
Angle die-cast aluminium, Bright.
Screws and slot nuts steel, Galvanized.
End cap polyamide, Fibreglass reinforced.



K1047

Angle elements T1, Type I
Material & Version:
Aluminium, Anodized.



K1048

Angle elements T2, Type I
Material & Version:
Aluminium, Anodized.



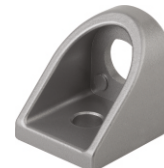
K1049

Clamping angles, Type I
Material & Version:
Clamping angle die-cast zinc,
Painted aluminium tone.



K1050

Joint angle, Type I
Material & Version:
Joint angle die-cast zinc,
Painted aluminium tone.
Pivot bush steel, Galvanized.



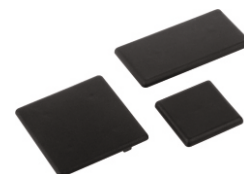
K1051

Joints, Type B and Type I
Material & Version:
Joint die-cast zinc, Painted aluminium tone.
Fasteners die-cast zinc, Galvanized.
Tapped bush and countersunk screws steel, Galvanized.



K1053

End caps, Type B and Type I
Material & Version:
Polyamide fibreglass reinforced, Black



K1054

Cover and adapter profiles
Type B and Type I
Material & Version:
Type I polypropylene.
Type B polypropylene + TPE.



K1055

Cover profile, Type I
Material & Version:
PVC, Black



K1056

Slide rail, Type I
Material & Version:
Polyethylene-HD, Black.



K1057

Foot plates, Type B and Type I
Material & Version:
Die-cast zinc, Bright or
black powder-coated.



Spring Plungers, Indexing Plungers, Ball Lock Pins



K0309

Spring plungers
with slot and ball
Material & Version :
Sleeve steel grade 5.8, Black oxidised.
Ball steel, Hardened.
Spring in spring steel class D.



K0310

Spring plungers
with slot and ball
Material & Version :
Sleeve 1.4305, Bright.
Ball 1.4034, Hardened.
Spring 1.4310.



K0311

Spring plungers
with slot and ball
Material & Version :
Sleeve, plastic.
Ball POM, White.
Spring 1.4310.



K0312

Spring plungers
with slot and ball
Material & Version :
Sleeve plastic.
Ball stainless steel 1.4034, Hardened.
Spring 1.4310.



K0609

Spring plungers
with slot and ball,
Material & Version :
Sleeve 1.4305, Bright.
Ceramic ball Si3N4.
Spring 1.4310.



K0313

Spring plungers
with slot and thrust pin
Material & Version :
Sleeve steel grade 5.8, Black oxidised.
Thrust pin steel, Hardened.
Spring steel grade D.



K0314

Spring plungers
with slot and thrust pin
Material & Version :
Sleeve 1.4305, Bright.
Thrust pin 1.4034, Hardened.
Spring 1.4310.



K0656

Spring plungers with end position feedback
Material & Version :
Sleeve, Black oxidised.
Thrust pin, Hardened.
Spring steel grade D.
Inductive proximity switch.



K0315

Spring plungers
with hexagon socket and ball
Material & Version :
Sleeve steel grade 5.8, Black oxidised.
Ball steel, Hardened.
Spring in spring steel class D.



K0316

Spring plungers
with hexagon socket and ball
Material & Version :
Sleeve 1.4305, Bright.
Thrust pin 1.4034, Hardened.
Spring 1.4310.



K0610

Spring plungers
with hexagon socket and ball
Material & Version :
Sleeve 1.4305, Bright.
Ceramic ball Si3N4.
Spring 1.4310.



K0657

Spring plungers with hexagon
socket and thrust pin, long version
Material & Version :
Sleeve steel grade 5.8, Black oxidised.
Thrust pin steel, Hardened.
Spring steel grade D.



K0317

Spring plungers
with hexagon socket and thrust pin
Material & Version :
Sleeve steel grade 5.8, Black oxidised.
Thrust pin steel, Hardened.
Spring steel grade D.



K0318

Spring plungers
with hexagon socket and thrust pin
Material & Version :
Sleeve steel grade 5.8.
Thrust pin POM.
Spring steel grade D.



K0319

Spring plungers
with hexagon socket and thrust pin
Material & Version :
Sleeve 1.4305, Bright.
Thrust pin 1.4034, Hardened.
Spring 1.4310.



K0320

Spring plungers
with hexagon socket and thrust pin
Material & Version :
Stainless steel sleeve 1.4305, Bright.
Thrust pin POM.
Stainless steel spring 1.4310.



Spring Plungers, Indexing Plungers, Ball Lock Pins

K0321

Spring plungers with slot and ball
LONG-LOK thread lock nylon
Material & Version :
Sleeve steel grade 5.8, Black oxidised.
Ball steel, Hardened.
Spring in spring steel class D.



K0322

Spring plungers with slot and ball
LONG-LOK thread lock nylon
Material & Version :
Sleeve 1.4305, Bright.
Ball 1.4034, Hardened.
Spring 1.4310.



K0323

Spring plungers with slot and thrust pin
LONG-LOK thread lock nylon
Material & Version :
Sleeve steel grade 5.8, Black oxidised.
Ball steel, Hardened.
Spring in spring steel class D.



K0324

Spring plungers with slot and thrust pin
LONG-LOK thread lock nylon
Material & Version :
Sleeve 1.4305, Bright.
Ball 1.4034, Hardened.
Spring 1.4310.



K0325

Spring plungers with hexagon socket and
LONG-LOK thread lock nylon
Material & Version :
Sleeve steel grade 5.8, Black oxidised.
Ball steel, Hardened.
Spring in spring steel class D.



K0326

Spring plungers with hexagon
socket and ball
LONG-LOK thread lock nylon
Material & Version :
Sleeve 1.4305, Bright.
Ball 1.4034, Hardened. Spring 1.4310.



K0327

Hexagon socket and thrust pin
LONG-LOK thread lock nylon
Material & Version :
Sleeve steel grade 5.8, Black oxidised.
Ball steel, Hardened.
Spring in spring steel class D.



K0328

Hexagon socket and thrust pin
LONG-LOK thread lock nylon
Material & Version :
Sleeve steel grade 5.8.
Thrust pin POM.
Spring steel grade D.



K0329

Hexagon socket and thrust pin
LONG-LOK thread lock nylon
Material & Version :
Sleeve 1.4305, Bright.
Ball 1.4034, Hardened.
Spring 1.4310.



K0330

Hexagon socket and thrust pin,
LONG-LOK thread lock nylon
Material & Version :
Stainless steel sleeve 1.4305, Bright.
Thrust pin POM.
Stainless steel spring 1.4310.



K0331

Spring plungers with head
Material & Version :
Free cutting steel, Black oxidised.
Thrust pin hardened.



K0332

Locators
Material & Version :
Free-cutting steel, Bright, hardened.



K0333

Spring plungers smooth version
Material & Version :
Sleeve and spring stainless steel.
Ball stainless steel or POM.
Ball hardened, bright.



K0333

Spring plungers
smooth version, extended
Material & Version :
Sleeve and spring stainless steel.
Ball stainless steel or POM.
Ball hardened, bright.



K0334

Spring plungers
smooth version, plastic
Material & Version :
Sleeve thermoplastic, Black.
Spring stainless steel.
Ball in stainless steel, Hardened or in POM.



K0582

Spring plungers with detent ring
Material & Version :
Sleeve stainless steel, Bright.
Spring stainless steel.
Ball stainless steel, Hardened.
O-ring NBR, Black.



K0335

Spring plungers smooth version
without collar
Material & Version :
Sleeve and spring stainless steel.
Ball stainless steel, Hardened or POM.



K0336

Spring plungers with head
Material & Version :
Free cutting steel or stainless steel,
Steel black oxidised or Stainless steel bright.
Ball steel or stainless steel, hardened.



Ball Lock Pins

K0337

Spring plungers smooth version
double-sided
Material & Version :
Sleeve brass.
Ball and spring stainless steel.
Balls hardened, bright.



K0583

Double ball catch
Material & Version :
Housing and latch chrome plated brass.
Balls and springs stainless steel.



K0368

Lateral spring plungers
Material & Version :
Sleeve aluminium.
Spring steel.
Thrust pin steel, Hardened or POM.



K0369

Eccentric bushes and assembly tool
Material & Version :
Steel, Black oxidised.



K0370

Lateral spring plungers without thrust pin
Material & Version :
Sleeve aluminium, Galvanized.
Receiving washer steel, Hardened & Burnished.
Spring steel.



K0371

Lateral spring plungers
with threaded sleeve
Material & Version :
Thrust pin steel, Hardened & Galvanized.
Sleeve steel, Blue galvanized.



K0372

Lateral spring plungers
with threaded sleeve
without thrust pin
Material & Version :
Sleeve steel, Blue galvanized.



K0373

Spring plungers push-pull
Material & Version :
Sleeve steel, Blue galvanized.
Spring pins steel, Black oxidised.



K0977

Spring plungers push-pull
with rotation lock
Material & Version :
Sleeve steel, Galvanized, blue chromed.
Pin steel, Case-hardened, black-oxidised.



K0374

Lateral spring plungers
Material & Version :
Body mild steel, Black oxidised.
Ball steel or stainless steel
hardened or POM.
Spring stainless steel or plastic.



K0338

Indexing plungers
Material & Version :
Indexing pin Steel or 1.4034 SS or 1.4305 SS.
Indexing pin Hardened or not hardened.
Sleeve steel or 1.4305 SS.
Mushroom knob thermoplastic.



K0630

Indexing plungers, extended indexing pin
Material & Version :
Indexing pin Steel or 1.4034 SS or 1.4305 SS.
Indexing pin Hardened or not hardened.
Sleeve steel or 1.4305 SS.
Mushroom knob thermoplastic.



K0631

Indexing plungers short version
Material & Version :
Indexing pin Steel or 1.4305 SS.
Indexing pin Hardened or not hardened.
Sleeve stainless steel 1.4305.
Mushroom knob thermoplastic.



K0632

Indexing plungers stainless steel
Material & Version :
Indexing pin 1.4034 SS or 1.4305 SS.
Indexing pin Hardened or not hardened.
Threaded sleeve 1.4305.
Mushroom knob 1.4305, electrolytic-polish.



K0735

Indexing plungers for thin-walled parts
Material & Version :
Indexing pin steel or 1.4305.
Indexing pin Hardened or not hardened.
Sleeve steel Or 1.4305 SS.
Mushroom knob black grey thermoplastic.



K0339

Indexing plungers
Material & Version :
Indexing pin Steel or 1.4034 SS or 1.4305 SS.
Indexing pin Hardened or not hardened.
Sleeve steel or 1.4305 SS.
Mushroom knob thermoplastic.



K0747

Indexing plungers
Material & Version :
Indexing pin steel or 1.4305 SS.
Indexing pin Hardened or not hardened.
Sleeve steel 1.0718 or 1.4305 SS.
Mushroom knob black grey thermoplastic.



K0748

Indexing plungers short version
Material & Version :
Indexing pin steel or 1.4305 SS.
Indexing pin Hardened or not hardened.
Sleeve steel 1.0718 or 1.4305 SS.
Mushroom knob black grey thermoplastic.



Spring Plungers, Indexing Plungers, Ball Lock Pins

K0340

Indexing plungers
Material & Version :
Steel grade 5.8, Blue chromed.



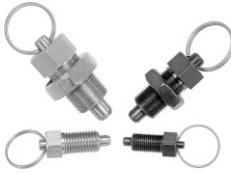
K0341

Indexing plungers
Material & Version :
Indexing pin steel or 1.4034 SS
or 1.4305 SS.
Indexing pin hardened or not hardened.
Sleeve steel or 1.4305 SS.



K0342

Indexing plungers
Material & Version :
Indexing pin steel or 1.4034 SS
or 1.4305 SS.
Sleeve steel or 1.4305 SS.
Key ring 1.4310, bright.



K0343

Indexing plungers without collar
Material & Version :
Indexing pin Steel or 1.4034 SS
or 1.4305 SS. Sleeve steel or 1.4305 SS.
Mushroom knob thermoplastic.



K0633

Indexing plungers w/o collar
with extended indexing pin
Material & Version :
Indexing pin Steel or 1.4034 SS or 1.4305 SS.
Sleeve steel or 1.4305 SS.
Mushroom knob thermoplastic.



K0634

Indexing plungers without collar
Material & Version :
Indexing pin 1.4034 SS or 1.4305 SS.
Indexing pin Hardened or not hardened.
Threaded sleeve 1.4305.
Mushroom knob 1.4305, electrolytic-polish.



K0344

Indexing plungers without collar
Material & Version :
Indexing Pin Steel or 1.4034 SS
or 1.4305 SS.
Sleeve steel or 1.4305 SS.
Mushroom knob thermoplastic.



K0345

Indexing plungers without collar
Material & Version :
Indexing pin Steel or 1.4034 SS or 1.4305 SS.
Indexing pin Hardened or not hardened.
Sleeve steel or 1.4305 SS.



K0635

Indexing plungers without collar
Material & Version :
Indexing pin steel or 1.4034 SS or 1.4305
Indexing pin hardened or not hardened.
Sleeve steel or 1.4305 SS.
Key ring 1.4310, bright.



K0346

Indexing plungers without collar
Material & Version :
Indexing pin steel or 1.4305 SS.
Indexing pin hardened or not hardened.
Sleeve 1.0403 weldable or 1.4301 weldable.
Mushroom knob black grey thermoplastic.



K0347

Indexing plungers without collar
Material & Version :
Indexing pin steel or 1.4034 SS
or 1.4305 SS.
Sleeve 1.0403 weldable or 1.4301 weldable.
Mushroom knob black grey thermoplastic.



K0636

Indexing plungers without collar
Material & Version :
Indexing pin steel or 1.4034 SS or 1.4305 SS.
Indexing pin hardened or not hardened.
Sleeve 1.0403 weldable or 1.4301 weldable.
Key ring 1.4310, bright.



K0665

Spacer rings
Material & Version :
Stainless steel
Bright.



K0736

Indexing plungers – Premium with tapered pin
Material & Version :
Indexing pin steel or 1.4034 SS.
Indexing pin Hardened.
Sleeve steel or 1.4305 SS.
Mushroom knob black grey thermoplastic.



K0736

Bushes tapered
Material & Version :
Steel or stainless steel 1.4034.
Black oxidised or bright.
Hardened & ground.



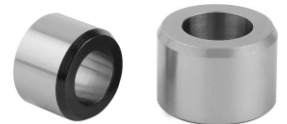
K0736

Indexing plungers – Premium with cylindrical pin
Material & Version :
Indexing pin steel or 1.4034 SS.
Indexing pin Hardened.
Sleeve steel or 1.4305 SS.
Mushroom knob black grey thermoplastic.



K0736

Bushes cylindrical
Material & Version :
Steel or stainless steel 1.4034.
Black oxidised or bright.
Hardened & ground.



K0359

Indexing plungers - Precision
with tapered pin
Material & Version :
Steel, Hardened & ground.
Grip ball thermoplastic.



Spring Plungers, Indexing Plungers,

Ball Lock Pins

K0360

Bushes tapered
Material & Version :
Steel, Hardened and ground.



K0361

Indexing plungers - Precision
with cylindrical pin
Material & Version :
Steel, Hardened & ground.
Grip ball thermoplastic.



K0362

Bushes cylindrical
Material & Version :
Steel, Hardened & ground.



K0245

Indexing and clamp grips
Material & Version :
Thermoplastic grip, Black grey.
Indexing pin and screw steel 5.8,
Black oxidised.
Indexing pin hardened and ground.



K0348

Cam-action indexing plungers
Material & Version :
Steel grade 5.8, Black oxidised.
Pin hardened and ground.



K0637

Cam-action indexing plungers
Material & Version :
Stainless steel 1.4305, Bright.
Indexing pin ground, not hardened.



K0638

Mounting brackets
Material & Version :
Aluminium 3.2163, Black anodized



K0638

Mounting brackets
Material & Version :
Steel, Black oxidised.



K0639

Cam-action indexing plungers
Material & Version :
Handle 1.0503, Black oxidised.
Pin steel grade 5.8, Hardened.
Sleeve 1.0403 weldable.



K0640

Cam-action indexing plungers
Material & Version :
Handle stainless steel 1.4308.
Indexing pin stainless steel 1.4305.
Sleeve weldable stainless steel 1.4301.



K0349

Barrel slide bolts
Material & Version :
Housing die-cast zinc, Painted silver.
Bolt stainless steel, Bright.



K0363

Ball lock pins
self-locking
Material & Version :
Grip and push button thermoplastic.
Metal parts stainless steel, Bright.



K0364

Ball lock pins
self-locking
Material & Version :
Metal parts stainless steel, Bright.



K0790

Ball lock pins
self-locking
Material & Version :
Grip and push button stainless steel 1.4305.
Pin stainless steel 1.4305.
Balls stainless steel 1.4125.



K0791

Ball lock pins with mushroom knob self-locking
Material & Version :
Mushroom knob and push
button stainless steel 1.4305.
Pin stainless steel 1.4305.
Balls stainless steel 1.4125.



K0641

Ball lock pins with mushroom knob, self-locking,
Material & Version :
Pin stainless steel 1.4542.
Mushroom knob and push button
stainless steel 1.4305.
Balls stainless steel 1.4125.



K0746

Ball lock pins
with grip ring, self-locking,
Material & Version :
Pin stainless steel 1.4542.
Head & push button stainless steel 1.4305.
Balls stainless steel 1.4125.



K0365

Locking pins
Material & Version :
Grip thermoplastic, Black.
Steel parts stainless steel, Bright.



Spring Plungers, Indexing Plungers, Ball Lock Pins

K0365

Locking pins with key ring
Material & Version :
Steel pin, Galvanized.
Key ring stainless steel, Bright.



K0776

Locking pins with folding latch
Material & Version :
Steel galvanized.



K0772

Locking pins with axial lock
Material & Version :
Steel galvanized.



K0366

Ball lock pins with T-grip, self-locking
Material & Version :
Pin stainless steel 1.4542.
Grip die-cast aluminium EN-AC 46000.
Push button aluminium EN-AW 2024 T4.
Balls stainless steel 1.4125.



K0642

Ball lock pins with L-grip, self-locking
Material & Version :
Pin stainless steel 1.4542.
Grip die-cast aluminium EN-AC 46000.
Push button aluminium EN-AW 2024 T4.
Balls stainless steel 1.4125.



K0367

Safety spiral cables
Material & Version :
Spiral cable PUR, Black.
Eye galvanized copper.
Key ring steel, Chrome plated.



K0367

Retaining cables with loop
Material & Version :
Cable stainless steel, Plastic coated.
Clamp and crimp terminal aluminium.



K0367

Key rings
Material & Version :
Stainless steel 1.4310,
Bright.



K0724

Bushing for ball lock pins
Material & Version :
Stainless steel 1.4305,
Steel parts bright.



K0724

Bushing for ball lock pins
with LONG-LOK thread lock nylon
Material & Version :
Stainless steel 1.4305, Bright.



Support Elements, Locating Elements, Stop Elements



K0282

Self-aligning pads
Material & Version :
Body carbon steel,
Tempered & polished.
Ball, ball bearing steel 1.2067,
Hardened.



K0302

Self-aligning pads, swivel angle 12°
Material & Version :
Body carbon steel, Tempered.
Ball ball-bearing steel 1.3505,
Hardened (50 - 55 HRC).



K0283

Self-aligning pads,
swivel angle 14° and 20°
Material & Version :
Body steel, Black oxidised.
Ball rust and acid resistant steel.



K0284

Self-aligning pads with o-ring
Material & Version :
Body carbon steel tempered,
Ball tool steel or POM or diamond
impregnated ss or ss with
polyurethane face.



K0285

Self-aligning pads with o-ring and
exchangeable inserts
Material & Version :
Body carbon steel.
Inserts tool steel or POM or diamond
impregnated ss or ss with polyurethane face



K0286

Self-aligning pads, self-righting
Material & Version :
Carbon steel hardened, black oxidised.



K0287

Self-aligning pads, adjustable
Material & Version :
Steel Housing tempered and
manganese phosphate.
Stainless steel Housing tempered
and electropolished.



K0288

Self-aligning pads adjustable, with o-ring
Material & Version :
Body carbon steel tempered, Black oxidised.
Ball tool steel or POM or
diamond impregnated ss or
ss with polyurethane face.



K0289

Self-aligning pads adjustable, with o-ring &
exchangeable inserts
Material & Version :
Body carbon steel. Inserts tool steel or
POM or diamond impregnated
ss or ss with polyurethane face



K0290

Self-aligning pads adjustable,
with o-ring and hexagon socket
Material & Version :
Body carbon steel tempered,
Ball tool steel or POM or diamond
impregnated ss or ss with polyurethane face.



K0291

Self-aligning pads adjustable, with o-ring,
exchangeable inserts & hexagon socket
Material & Version :
Body carbon steel. Inserts tool steel or
POM or diamond impregnated
ss or ss with polyurethane face



K0380

Ball-end thrust screws with head
Material & Version :
Screw carbon steel, grade 10.9, Black.
Ball ball-bearing steel, hardened, Bright.



K0381

Ball-end thrust screws with head
Material & Version :
Stainless steel, Bright.



K0382

Ball-end thrust screws without head
with fine thread
Material & Version :
Screw carbon steel, grade 10.9, Black.
Ball ball-bearing steel, hardened, Bright.



K0383

Ball-end thrust screws without head
with full ball
Material & Version :
Screw carbon steel, grade 10.9, Black.
Ball ball-bearing steel, hardened,
Bright or POM.



K0384

Ball-end thrust screws without head
stainless steel with full ball
Material & Version :
Screw stainless steel.
Ball stainless steel, POM or ceramic Si3N4.



Support Elements, Locating Elements, Stop Elements

K0383

Ball-end thrust screws without head with flattened ball
Material & Version :
Screw carbon steel, grade 10.9, Black.
Ball ball-bearing steel, hardened, Bright or POM.



K0384

Ball-end thrust screws without head stainless steel with flattened ball
Material & Version :
Screw and ball stainless steel, Bright.



K0383

Ball-end thrust screws without head with flattened ball and rotation lock
Material & Version :
Screw carbon steel, grade 10.9, Black.
Ball ball-bearing steel, hardened, Bright.



K0666

Ball-end thrust screws without head with full ball, LONG-LOK thread lock nylon
Material & Version :
Screw carbon steel, grade 10.9, Black.
Ball ball-bearing steel, hardened, Bright or POM.



K0666

Ball-end thrust screws without head with flattened ball LONG-LOK thread lock nylon
Material & Version :
Screw carbon steel, grade 10.9, Black.
Ball ball-bearing steel, hardened, Bright.



K0403

Thrust screws with radiused half-dog point
Material & Version :
Screw steel grade 10.9, Black oxidised.
Pin tool steel, Hardened, Black oxidised.



K0272

Thrust screws with point
Material & Version :
Screw steel grade 10.9, Black oxidised.
Pin tool steel, Hardened, Black oxidised.



K0385

Grippers and inserts round
Material & Version :
Inserts tool steel or POM or diamond impregnated ss or ss with polyurethane face



K0385

Grippers and inserts round, with counterbore
Material & Version :
Inserts tool steel or POM or diamond impregnated SS.



K0386

Gripper screws hexagonal
Material & Version :
Hex head screw, grade 10.9, Black oxidised.
Serrations carbide, hardness 72-74 HRC.



K0387

Gripper pads square
Material & Version :
Hardened tool steel or carbide, Black oxidised.



K0388

Gripper studs
Material & Version :
Hardened tool steel or carbide, Black oxidised.



K0389

Thrust screws
Material & Version :
Screw grade 10.9, Black oxidised.
Pin brass or POM.



K0667

Thrust screws
Material & Version :
Screw stainless steel, Bright.
Pin brass or POM.



K0668

Thrust screws
LONG-LOK thread lock nylon.
Material & Version :
Screw grade 10.9, Black oxidised.
Pin brass or POM.



K0350

Locating pins with ball-end Form A
Material & Version :
Tool steel or stainless steel 1.4305.
Steel hardened and ground.
Stainless steel ground and kolsterised.



K0350

Locating pins with flattened ball end Form C
Material & Version :
Tool steel or stainless steel 1.4305.
Steel hardened and ground.
Stainless steel ground and kolsterised.



K0351

Locating pins with ball-end Form B
Material & Version :
Tool steel or stainless steel 1.4305.
Steel hardened and ground.
Stainless steel ground and kolsterised.



Stop Elements

K0351

Locating pins
with flattened ball-end Form D
Material & Version :
Tool steel or stainless steel 1.4305.
Steel hardened and ground.
Stainless steel ground and kolsterised.



K0352

Positioning pins cylindricalground
Material & Version :
Tool steel, Hardened and ground.



K0353

Positioning pins cylindrical
not ground
Material & Version :
Tool steel, Hardened.



K0354

Positioning pins free-milled
ground
Material & Version :
Tool steel, Hardened and ground.



K0355

Positioning pins free-milled
not ground
Material & Version :
Tool steel, Hardened.



K0356

Locating pins expanding
Material & Version :
Carbon steel, Tempered
and black oxidised.



K0292

Rest pads
Material & Version :
Tool steel, Hardened and ground.
No centre bore on top face.



K0293

Locating pins and rest pads
DIN 6321
Material & Version :
Tool steel, Hardened and ground.



K0298

Positioning feet
Material & Version :
Steel, Case-hardened and
black oxidised.



K0299

Positioning feet
Material & Version :
Body carbon steel, Tempered
and black oxidised.
Contact faces case-hardened.



K0300

Fixture feet
with external thread
Material & Version :
Carbon steel 1.1181, Black oxidised.



K0301

Fixture feet
with internal thread
Material & Version :
Body carbon steel, Tempered
and black oxidised.
Contact faces case-hardened.



K0294

Rest pads
Material & Version :
Body carbon steel, Tempered
and black oxidised.



K0295

Rest pads
with positioning pin
Material & Version :
Body carbon steel, Tempered
and black oxidised.
Contact faces case-hardened.



K0296

Feet
with threaded pin, DIN 6320
Material & Version :
Carbon steel 1.1172, Black oxidised.



K0303

Locating feet
Material & Version :
Steel 1.0301, Case-hardened
and black oxidised.



K0297

Support bolts
Material & Version :
Tempered steel, Black oxidised.



K0305

Rest pads
Material & Version :
Steel 1.0301, Case-hardened,
black oxidised and ground.



Support Elements, Locating Elements, Stop Elements

K0306

Rest pads adjustable
with locknut
Material & Version :
Carbon steel 1.1181, Surface hardened,
black oxidised.



K0307

Rest pads
Material & Version :
Carbon steel or bras, Tempered and
black oxidised.



K0308

Jack screws
Material & Version :
Carbon steel, Black oxidised.



K0581

Stop adjustable,
with end position feedback
Material & Version :
Screw and plunger stainless steel 1.4301.
Guide bush stainless steel 1.4112, Bright.
Sensor housing stainless steel.



K0729

Spherical washers
DIN 6319, edition 10/01
Material & Version :
Mild steel or stainless steel.
Steel case hardened.
Stainless steel bright, not hardened.



K0691

Spherical levelling washers
Material & Version :
Steel 1.7225, Blue-chromed.
Stainless steel 1.4305, Bright.



K0692

Levelling setshigh version
Material & Version :
Steel 1.7225, Zinc plated, Blue chromed.
Stainless steel 1.4305, Bright.



K0693

Levelling setswith locknut
Material & Version :
Steel 1.7225, Zinc plated, Blue chromed.
Stainless steel 1.4305, Bright.



K0694

Levelling setslow version
Material & Version :
Steel 1.7225, Zinc plated, Blue chromed.
Stainless steel 1.4305, Bright.



K0695

Levelling setsspherical washer
Material & Version :
Steel 1.7225, Zinc plated, Blue chromed.
Stainless steel 1.4305, Bright.



K0097

Levelling setswith locknut
Material & Version :
Steel 1.7225, Zinc plated, Blue chromed.
Stainless steel 1.4305, Bright.



K0115

Levelling sets
spherical washer with locknut
Material & Version :
Steel 1.7225, Zinc plated, Blue chromed.
Stainless steel 1.4305, Bright.



K0057

Levelling setsspherical washer
Material & Version :
Steel 1.7225, Zinc plated, Blue chromed.
Stainless steel 1.4305, Bright.



K0119

Levelling sets
spherical washer with locknut
Material & Version :
Steel 1.7225, Zinc plated, Blue chromed.
Stainless steel 1.4305, Bright.





K0697

Studs, DIN 6379
Material & Version:
Carbon steel.
Thread rolled.
M6-M12 tempered to 10.9, black.
M14-M36 tempered to 8.8, black.



K0698

T-slot bolts, DIN 787
Material & Version:
Carbon steel.
Forged and milled, rolled thread.
M6-M12 tempered to 10.9, black.
M14-M36 tempered to 8.8, black.



K0699

T-slot bolts, DIN 787
Material & Version:
Carbon steel.
Forged and milled, rolled thread,
tempered to 12.9, black.



K0700

Hexagon nuts thin, DIN 439
Material & Version:
Steel or stainless steel (A 2).
Steel grade 04, galvanized or black oxidised.
Stainless steel A2, bright.



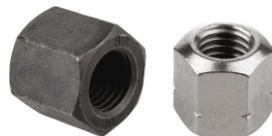
K0701

Hexagon nuts with collar, DIN 6331
Material & Version:
Carbon steel or stainless steel (A2).
Steel grade 10, black.
Stainless steel A 2-70, bright.



K0702

Hexagon nuts height 1.5xD,
DIN 6330 enhanced
Material & Version:
Carbon steel or stainless steel (A2).
Tempered to 10, black.
Stainless steel A 2-70, bright.



K0794

Hexagon nuts
with spherical seat
Material & Version:
Carbon steel.
Tempered to 900 N/mm², black oxidised.



K0584

Clamping force intensifiers
Material & Version:
Bearing housing steel.
Black oxidised.



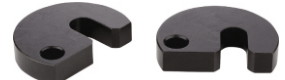
K0730

C-washers, DIN 6372
Material & Version:
Carbon steel.
Tempered and black oxidised.



K0703

C-washers captive, DIN 6371
Material & Version:
Carbon steel 1.0760.
Nitrided and black oxidised.



K0704

Shoulder screws with slotted flat head
DIN 923
Material & Version:
Steel, Black oxidised, grade 5.8.



K0705

Shoulder screws, DIN ISO 7379
Material & Version:
Steel.
Grade 12.9, black oxidised.
Shaft OD ground.



K0706

Shoulder screws
with hexagon head, DIN 609
Material & Version:
Steel Grade 8.8, black oxidised.
Shaft OD ground.



K0707

Grub screws with flat point
Hexagon socket, DIN 913
Material & Version:
Steel or stainless steel (A 2).
Steel class 45 H, Black.
Stainless steel A 2-70, Bright.



K0708

Screws with countersunk head
Hexagon socket, DIN 7991
Material & Version:
Steel or stainless steel (A 2).
Steel grade 8.8, Black.
Stainless steel A 2-70, Bright.



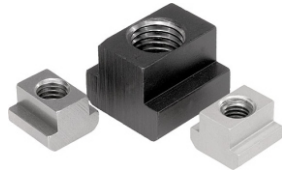
K0696

Parallel keys, DIN 6885 A
Material & Version:
Steel 1.1192, Bright.



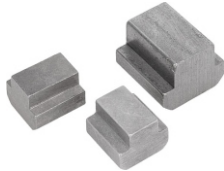
K0377

Nuts for T-slots, DIN 508
Material & Version:
Carbon steel grade 10, Black
EN AW-7075, Bright or
Stainless steel 1.4305, Bright.



K0378

Nuts for T-slotsblanks
Material & Version:
Carbon steel or
Stainless steel 1.4305.



K0379

Nuts for T-slotsrhombic form
Material & Version:
Carbon steel, Tempered to 8
and black oxidised.



K0396

Eye bolts, DIN 444, Form B
Material & Version:
Steel, Grade 8.8, Black oxidised or
Stainless steel, Bright.



K0398

Threaded inserts
Material & Version:
Threaded insert in steel or
stainless steel.



K0399

Threaded inserts reinforced
Material & Version:
Threaded insert in steel or
stainless steel.



K0400

Threaded inserts solid body
Material & Version:
Threaded insert in steel,
Passivated.



K0401

Threaded inserts
with internal thread, self-locking
Material & Version:
Threaded insert in stainless steel,
Passivated.



K0402

Threaded inserts reinforced
internal thread, self-locking
Material & Version:
Threaded insert in stainless steel,
Passivated.



K0653

Repair kit
Material & Version:
Threaded insert in steel,
Passivated.



K0979

Threaded inserts self-tapping
with cutting bores
Material & Version:
Steel or stainless steel 1.4305
Steel, Case-hardened, Yellow passivated
Stainless steel, Bright.



K0978

Threaded inserts self-tapping
with cutting slot
Material & Version:
Steel or stainless steel 1.4305
Steel, Case-hardened, Yellow passivated
Stainless steel, Bright.



K0404

Studs
with screw-in stop for gluing in
Material & Version:
Steel or stainless steel 1.4305.
Steel, Blue-chromed.
Stainless steel, Bright.



K0405

Stud sets
with screw-in stop for gluing in
Material & Version:
Steel or stainless steel 1.4305.
Steel, Blue-chromed.
Stainless steel, Bright.



K1021

Drill bushes cylindrical, DIN 179
Material & Version:
Special steel, Hardened and ground.
Hardness 740 ±80 HV 10.



K1022

Drill bushes flanged, DIN 172
Material & Version:
Special steel, Hardened and ground.
Hardness 740 ±80 HV 10.



K0406

Shaft collars set screw, DIN 705
Material & Version:
Steel, Bright.



K0406

Shaft collars set screw, DIN 705
Material & Version:
Stainless steel 1.4305, Bright.



Machine and Fixture Components

K0407

Shaft collars with wing grip, DIN 705
Material & Version:
Shaft collar steel, Bright.
Wing grip thermoplastic, Black grey.
Threaded pin steel grade 5.8,
Blue chromed.



K0611

Shaft collars one-piece
Material & Version:
Steel 1.0718.
Stainless steel 1.4305, Bright.



K0612

Shaft collars two-piece
Material & Version:
Steel 1.0718.
Stainless steel 1.4305, Bright.



K0986

Shaft collarstapped
Material & Version:
Steel 1.0718.
Stainless steel 1.4305, Bright.



K0397

Cleviswith external thread
Material & Version:
Carbon steel 1.1191,
Tempered and black oxidised.



K0390

Grub screws
with thrust point DIN 6332
Material & Version:
Steel or stainless steel
Thrust point, Steel case-hardened, Black.
Stainless steel, Bright.



K0392

Thrust pads, DIN 6311
Material & Version:
Steel, Case-hardened, Black oxidised.
Stainless steel, Bright



K0394

Thrust spindles
Material & Version:
Star grip thermoplastic, Black.
Grub screw steel grade 5, Black oxidised.
Thrust pad plastic PA 6.



K0376

Clamp hubs
Material & Version:
Carbon steel 1.1206,
Black oxidised.



K0133

Clamping joints
Material & Version:
Handle fibreglass reinforced thermoplastic,
Steel parts grade 5.8. Remaining components:
High-strength aluminium,
Nickel silver anodized.



K0134

Clamping jointsindividually adjustable
Material & Version:
Wing grip black grey thermoplastic.
Screw steel 5.8.
Remaining components:
High-strength aluminium, Nickel silver anodized.



K0135

Multiple connectors
Material & Version:
Wing grip black grey thermoplastic.
Screw steel 5.8.
Remaining components:
High-strength aluminium, Nickel silver anodized.



K0136

Clamping joints
Material & Version:
Sleeve and pin steel, High-gloss chromed.
Clamp block high-strength aluminium.
Wing grip black grey thermoplastic.



K0053

Swing screws
Material & Version:
Star grip thermoplastic, Black.
Eye bolt steel grade 8.8, Black oxidised.
Hinge pins carbon steel 1.1181, Tempered.



K0054

Hookswith a quick-acting star grip
Material & Version:
Hook steel 1.0718, Galvanized.
Quick-acting star grips thermoplastic,
Black.



K0182

Wing screws with lock wing nut
Material & Version:
Wing screw thermoplastic, Black grey.
Screw steel 5.8, Blue chromed.
Counter grip thermoplastic, Black grey.



K0629

Dial gauge collets
Material & Version:
Carbon steel, Black oxidised.
Collet tempered.



K0755

Tommy bars
with fixed or sliding T-bar,
DIN 6305 or DIN 6307
Material & Version:
Steel, Black oxidised.



K0756

T-thrust screws
with fixed or sliding T-bar,
DIN 6304 or DIN 6306
Material & Version:
Steel, Black oxidised.
Thrust pin hardened.



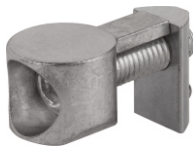
K1031

Connecting sets standard
Type I
Material & Version:
Steel, galvanized.



K1032

Connecting sets universal
Type I
Material & Version:
Connector die-cast zinc.
Screw and slot nuts steel, Galvanized.



K1033

Connecting sets central
Type I
Material & Version:
Steel, Galvanized.



K1034

Connecting sets central
Type B
Material & Version:
Steel, Galvanized.



K1035

Connecting sets central
Type B
Material & Version:
Steel, Galvanized.



K1036

Connecting sets automatic
Type I
Material & Version:
Steel, Galvanized.



K1037

Connecting sets automatic
Type B
Material & Version:
Steel, Galvanized.



K1038

Pin connector sets - Type B
Material & Version:
Pins, screws and T-nuts steel,
Galvanized.
Locating pin & end caps polyamide, fibreglass
Reinforced, Black.



K1039

Cube connector sets
Type B
Material & Version:
Cube die-cast aluminium, Bright.
Screws with self-tapping thread.
End caps polyamide, Black.



K1040

Central screw
Type B
Material & Version:
Steel, Galvanized.



K1028

T-nuts
Material & Version:
Steel, Galvanized.



K1029

Hammer-head screws
Material & Version:
Steel, Galvanized.



K1030

Flange nuts
Material & Version:
Steel, Galvanized.



K1041

Butt connector sets automatic
Type I
Material & Version:
Steel, Galvanized.



K1023

Slot nuts
twist-in Type I
Material & Version:
Steel, Galvanized.



K1024

Slot nuts
twist-in, keyed Type I
Material & Version:
Steel, Galvanized.



K1044

Fastening sets
for straps and angles
Material & Version:
Steel, Galvanized.



Buffer Elements



K0566

Rubber-metal buffers, type A
Material & Version :
Metal parts steel grade 5.6 or SS,
Galvanized or bright.
Elastomer natural rubber,
Medium hardness, 55 Shore A.

K0567

Rubber-metal buffers
type AT tapered
Material & Version :
Metal parts steel grade 5.6, Galvanized.
Elastomer natural rubber,
Medium hardness, 57 Shore A.

K0568

Rubber-metal buffers, type B
Material & Version :
Metal parts steel grade 5.6 or SS,
Galvanized or bright.
Elastomer natural rubber,
Medium hardness, 55 Shore A.

K0569

Rubber-metal buffers, type C
Material & Version :
Metal parts steel grade 5.6 or SS,
Galvanized or bright.
Elastomer natural rubber,
Medium hardness, 55 Shore A.

K0570

Rubber-metal buffers
type CT tapered
Material & Version :
Metal parts, steel, grade 5.6, Galvanized.
Elastomer natural rubber,
Medium hardness, 57 Shore A.

K0571

Rubber-metal buffers, type D
Material & Version :
Metal parts steel grade 5.6 or SS,
Galvanized or bright.
Elastomer natural rubber,
Medium hardness, 55 Shore A.

K0572

Rubber-metal buffers
type DS suction base
Material & Version :
Metal parts, steel, grade 5.6, Galvanized.
Elastomer natural rubber,
Medium hardness, 57 Shore A.

K0573

Rubber-metal buffers, type E
Material & Version :
Metal part steel grade 5.6, Galvanized.
Elastomer natural rubber,
Medium hardness, 55 Shore A.

K0574

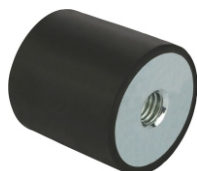
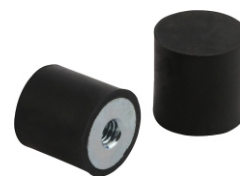
Rubber impact buffers
parabolic
Material & Version :
Metal part steel grade 5.6, Galvanized.
Elastomer natural rubber,
Medium hardness, 55 Shore A.

K0575

Rubber impact buffers
conical
Material & Version :
Metal part steel grade 5.6, Galvanized.
Elastomer natural rubber,
Medium hardness, 55 Shore A.

K0576

Rubber impact buffers
spherical
Material & Version :
Metal part steel grade 5.6, Galvanized.
Elastomer natural rubber,
Medium hardness, 55 Shore A.





K0443

Oil level gauges
Material & Version :
Housing thermoplastic polyamide.
Reflector aluminium.
Screw and hex nut steel, Galvanized.



K0444

Oil level gauges
Material & Version :
Housing steel.
Reflector aluminium.
Viewing glass thermoplastic polyamide.
Screw and hex nut steel, Galvanized.



K0445

Oil level sight glasses
Material & Version :
Housing in thermoplastic polyamide.
Plastic reflector.



K0446

Oil level sight glasses press-in
Material & Version :
Housing in thermoplastic polyamide.
Plastic reflector.



K0447

Oil level sight glasses domed
Material & Version :
Housing in thermoplastic polyamide.
Flat seal, asbestos-free.



K0448

Oil level sight glasses
Material & Version :
Housing in aluminium.
Reflector in aluminium or white plastic.
Polyamide viewing lens.



K0246

Oil level sight glasses
Material & Version :
Housing, reflector in aluminium.
Natural, clear glass viewing lens.
temperature-resistant to 150 °C.



K0449

Plugs to screw-in
Material & Version :
Elastomer, soft polyurethane red.



K0450

Plugs to screw-in
Material & Version :
Thermoplastic polyamide 66 Black.
Flat seal asbestos-free.



K0451

Plugs to press-in
Material & Version :
Housing & cap thermoplastic polyamide 66.
Air filter polyurethane (PU foam).
O-ring rubber (NBR).



K0452

Plugs magnetic
Material & Version :
Thermoplastic polyamide 66, Black.
Ferrite permanent magnet.
Flat seal asbestos-free.



K0453

Plugs magnetic
Material & Version :
Aluminium, Bright.
Ferrite permanent magnet.
Flat seal asbestos-free.



K0454

Plugs fill and drain hexagon cap
Material & Version :
Thermoplastic polyamide 66 Black.
Flat seal asbestos-free.



K0455

Plugs fill
knurled cap
Material & Version :
Thermoplastic polyamide 66, Black.
O-ring in rubber (NBR).



K0456

Caps for filler necks
Material & Version :
Housing, thermoplastic polyamide 66.
Air filter, polyurethane (PU foam).
Rubber flat seal (NBR).
Filter mesh 50 µm.



K0457

Vent screws
Material & Version :
Housing, cap in thermoplastic polyamide 66.
O-ring in rubber (NBR).
Filter mesh 60 µm.



Level Indicators, Screw Plugs

K0458

Vent screws with splash guard
Material & Version :
Housing, thermoplastic polyamide 66.
Air filter in polyurethane (PU foam).
Rubber flat seal (NBR).
Filter mesh 50 µm.



K0471

Filler necks
Material & Version :
Filler housing chrome steel.
Air filter polyurethane (PU foam).
Chain nickel-plated brass.
Filler sieve galvanized steel.



K0459

Vent screws with check valve
Material & Version :
Housing, thermoplastic polyamide 66.
Spring stainless steel.
Lift disc and flat seal rubber (NBR).



K0460

Vent screws brass
Material & Version :
Housing and cap brass.
Air filter galvanized steel wire mesh.
Air filter mesh 50 - 60 µm.
Flat seal asbestos-free.



K0461

Vent screws brass with check valve
Material & Version :
Housing and cap brass.
Spring stainless steel.
Lift disc aluminium.
Flat seal asbestos-free.



K0462

Plugs to press-in with dipstick
Material & Version :
Housing, thermoplastic polyamide 66.
Air filter polyurethane (PU foam).
Dipstick zinc, Phosphated.
Filter mesh 50 µm.



K0465

Vent screws with dipstick
Material & Version :
Housing, thermoplastic polyamide 66.
Air filter polyurethane (PU foam).
Dipstick zinc, Phosphated.
Filter mesh 50 µm.



K0467

Vent screws with check valve and dipstick
Material & Version :
Housing, thermoplastic polyamide.
Spring stainless steel.
Dipstick zinc, Phosphated.
Lift disc and seal rubber (NBR).



K0468

Dipsticks
Material & Version :
Thermoplastic polyamide handle.
Zinc dipstick, Phosphated.
O-ring in rubber (NBR).



K0470

Filler necks
Material & Version :
Housing thermoplastic polyamide 66.
Air filter polyurethane (PU foam).
Fastening screw nickel-plated steel.
Chain nickel-plated brass.





K0767

Ring bolts, DIN 580
Material & Version :
Drop forged Hardened steel 1.0401 or
Cast stainless steel 1.4301.



K0768

Ring nuts, DIN 582
Material & Version :
Drop forged Hardened steel 1.0401 or
Cast stainless steel 1.4301.



K0769

Ring bolts rotatable
Material & Version :
Ring in steel 1.6541, forged and
high tensile tempered screw in steel,
Grade 10.9. 100% electromagnetic crack
tested per EN 1677-1.



K0770

Ring bolts
swivel and 360° rotatable
Material & Version :
Steel, Red plastic-coated.
Quality class 8, ball bearing.



K0773

Weld-on D-ring
Material & Version :
Eye, steel type 1.6541, forged,
High tensile tempered,
red plastic coated.
Welding block, steel type S355JR.



K1059

D-Shackle
Material & Version :
Steel, D form.



K1058

Bow shackle
Material & Version :
Steel, Bow form.



K0585

Lifting bolts with retaining ring
Material & Version :
Bolts, ring nut and safety ring :
Dia. 12, 16 and 20 = 16MnCrS5 1.7139
Dia. 25 and 32 = 42CrMoS4 1.7227
Black oxidised.



K0760

Ball transfer units with steel housing
Material & Version :
Galvanized steel or stainless steel.



K0761

Ball transfer units
Material & Version :
Galvanized steel housing.
Polyamid PA 66 ball.



K0762

Ball transfer units undersprung
Material & Version :
Steel galvanized.



K0763

Ball transfer units
with solid steel housing
Material & Version :
Steel galvanized.



K0764

Ball transfer units
with fastening holes,
without housing
Material & Version :
Steel galvanized.



K0765

Ball transfer units
with spring clips
Material & Version :
Steel galvanized.



K0766

Tolerance rings
Material & Version :
Spring band steel

