

2018



JUZER ENGINEERING & CO.,



ALUMINUM PROFILES AND ACCESSORIES

New # 21 (Old No. 11) Errabalu Chetty Street,
1st Floor, Shop No. F8, Chennai - 600 001.

Phone : 044 - 2539 6141, 2539 6151

E-mail : sales@juzerengineering.com

www.juzerengineering.com



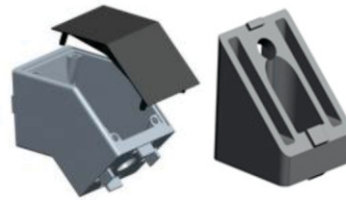
ALUMINUM DIE CAST BRACKETS



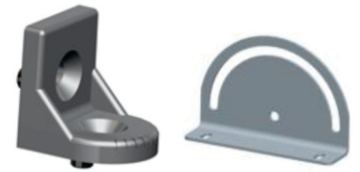
INNER BRACKET



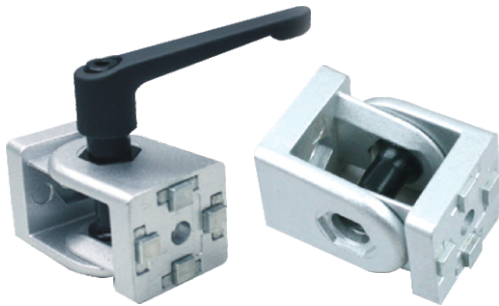
CORNER BRACKET 2 WAY / 3 WAY



ANGLE BRACKET 135 Deg. / 45 Deg.



ANGLE TILT ADJUSTER



PIVOT JOINT



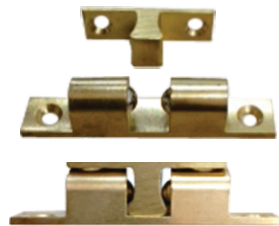
CENTRE CONNECTOR



MAGNETIC LATCH



MECHANICAL LATCH



BRASS BALL CATCH



BALL CATCH NYLON



POLYAMIDE HINGE

JUZER ENGINEERING & CO.,



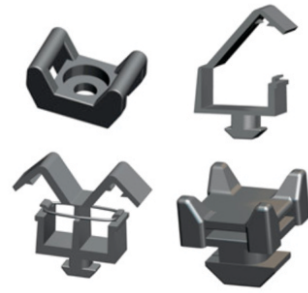
METAL DIE CAST HINGE



HINGE NYLON



HINGE ALUMINUM
DIE CAST



CABLE BINDER



PANEL
MOUNTING BLOCK



HANDLES NYLON



SHEET METAL PAD



POLYAMIDE
LEVELLING PAD



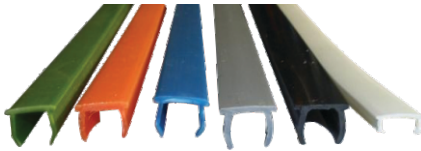
ALUMINUM DIE CAST
FLOOR BRACKET



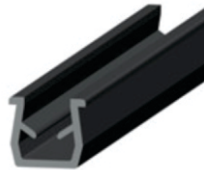
SHEET
METAL BRACKET



TOOL HANGER



T- SLOT PROFILE COVER



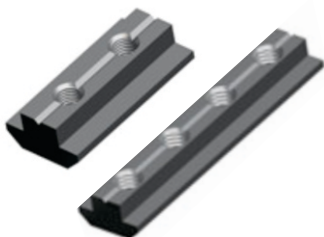
T- SLOT REDUCING
PROFILE COVER



T- SLOT REDUCING
PROFILE COVER
(STAINLESS STEEL)



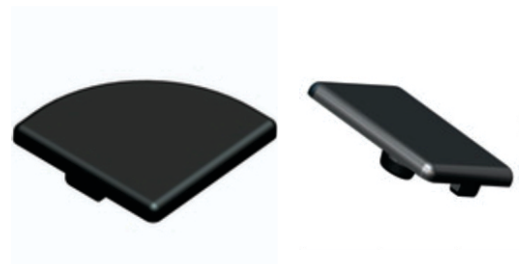
BALL TRANSFER UNIT



T-SLOT CONNECTOR



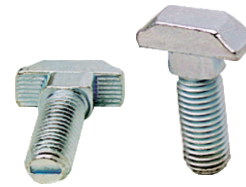
SPRING NUT



END CAPS



ALUMINUM PROFILES



T-BOLT



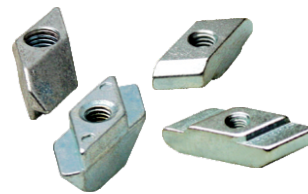
T-NUT



BOLT CONNECTOR



BUTTON SCREW



RHOMBUS NUT



T-SLOT NUT

PROFILE SIZE	ALUMINUM PROFILES & ACCESSORIES AVAILABLE WITH US
20x20	Aluminum Die Cast Brackets Suitable for 20, 30, 40 & 45 Series of Profiles
30x30	
30x60	T- Nuts & Button Screws Suitable for 20, 30, 40 & 45 Series of Profiles M4, M5, M6, M8
60x60	
40x40	Levelling Pad Suitable for 20, 30, 40 & 45 Series of Profiles M8, M10, M12 Stud with Pad Dia 60mm & 80mm
40x80	
80x80	Polyamide Hinge Suitable for 20, 30, 40 & 45 Series of Profiles
45x45	
45x90	
90x90	

JUZER ENGINEERING & CO.,

New # 21 (Old No. 11) Errabalu Chetty Street, 1st Floor,
Shop No. F8, Chennai - 600 001. Phone : 044 - 2539 6141, 2539 6151
E-mail : sales@juzerengineering.com | Web : www.juzerengineering.com

